

## ANNEXURE A | PGDP DRIVER ALIGNMENT

### DRIVER 1: ECONOMIC GROWTH, DEVELOPMENT AND PROSPERITY

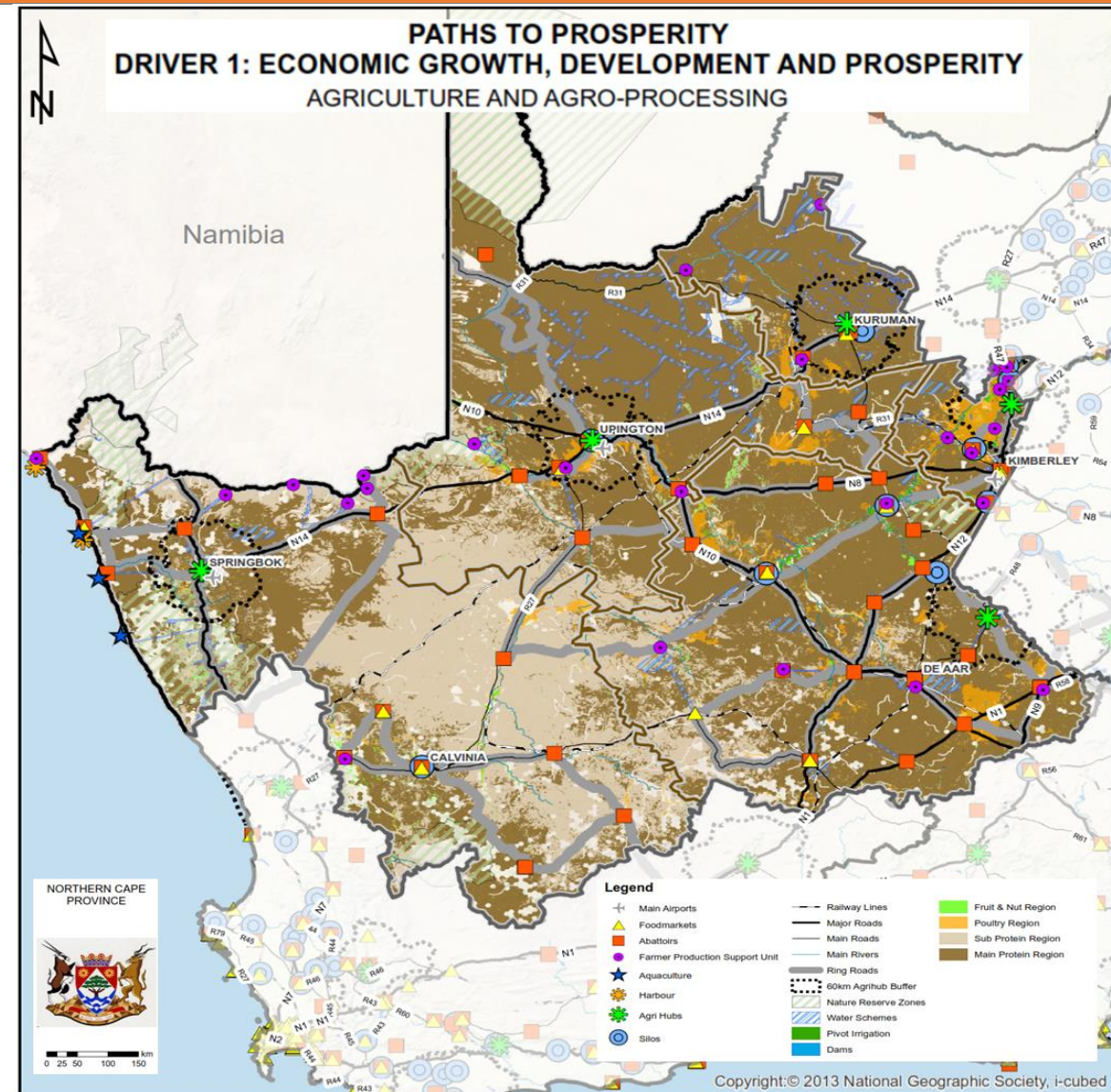
Driver 1 of the PGDP aims to ensure economic growth that will lead to increased development and prosperity for the people of the Northern Cape Province, a conscious effort is required to change the economic trajectory of the Province. To achieve this, the following developmental themes have been identified as priorities:

- Agriculture and Agro-Processing;
- Mining and Mineral Beneficiation;
- Tourism Market Development;
- Development of the Energy Sector;
- Manufacturing and Trade;
- Competitive Infrastructure Development;
- Employment and Skills Development;
- Innovation and the Knowledge Economy; and
- The Maritime Economy.

PGDP Driver 1 alignment and coordination: Agriculture and Agro-processing

DRIVER 1: ECONOMIC GROWTH, DEVELOPMENT AND PROSPERITY

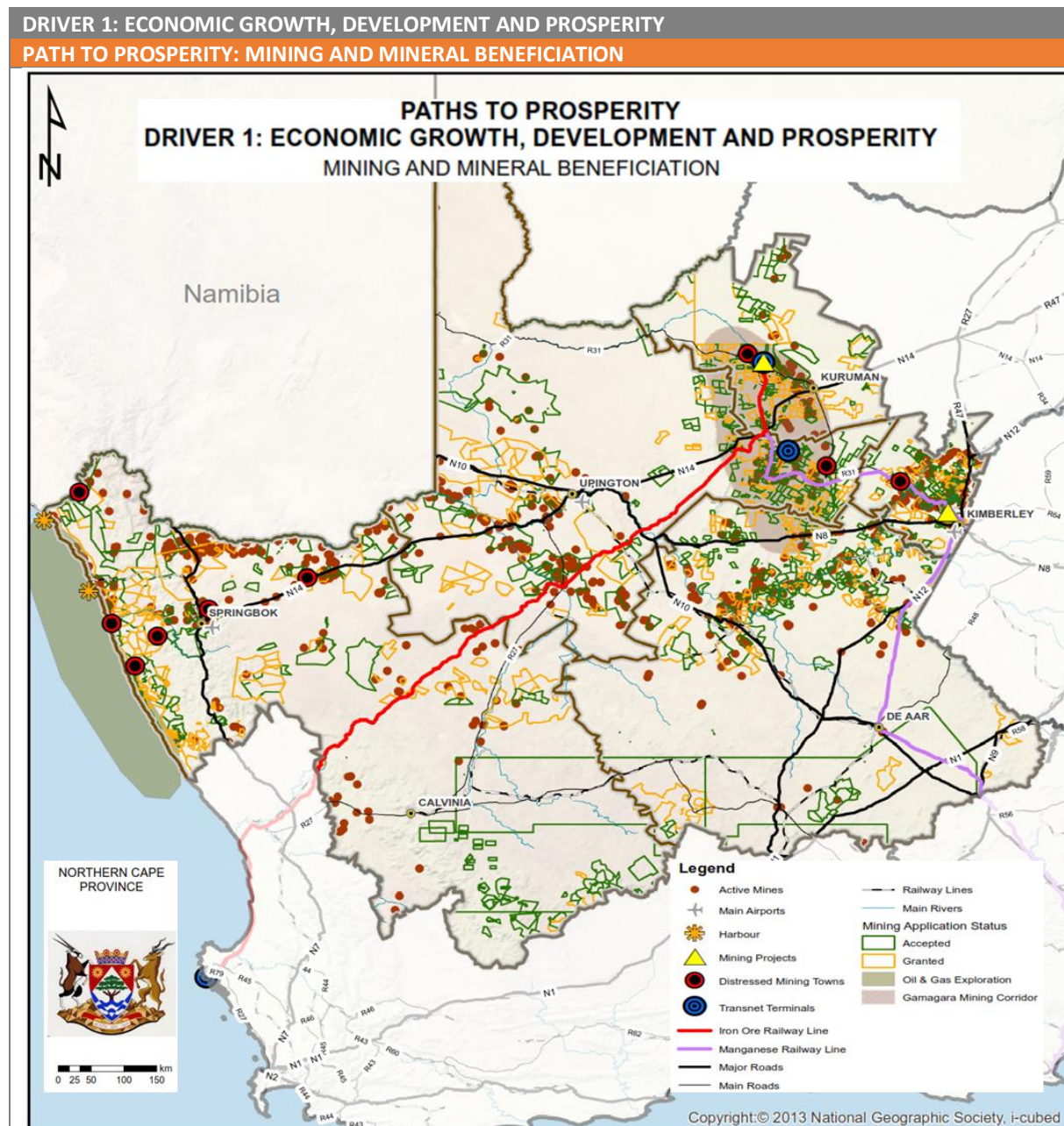
PATH TO PROSPERITY: AGRICULTURE AND AGRO-PROCESSING



In order to give effect and spatially represent the objective and associated strategies contained within the PGDP. The following data was utilised to develop the spatial representation.

- Commodity regions
- Agri-hub and FSPU unit locations and buffers
- Main transportation routes
- Proposed distribution routes of the DRDPs
- Location of existing supporting infrastructure such as abattoirs
- Location of food markets
- Protected areas
- Water schemes

## PGDP Driver 1 alignment and coordination: Mining and Mineral beneficiation



In order to give effect and spatially represent the objective and associated strategies contained within the PGDP. The following data was utilised to develop the spatial representation.

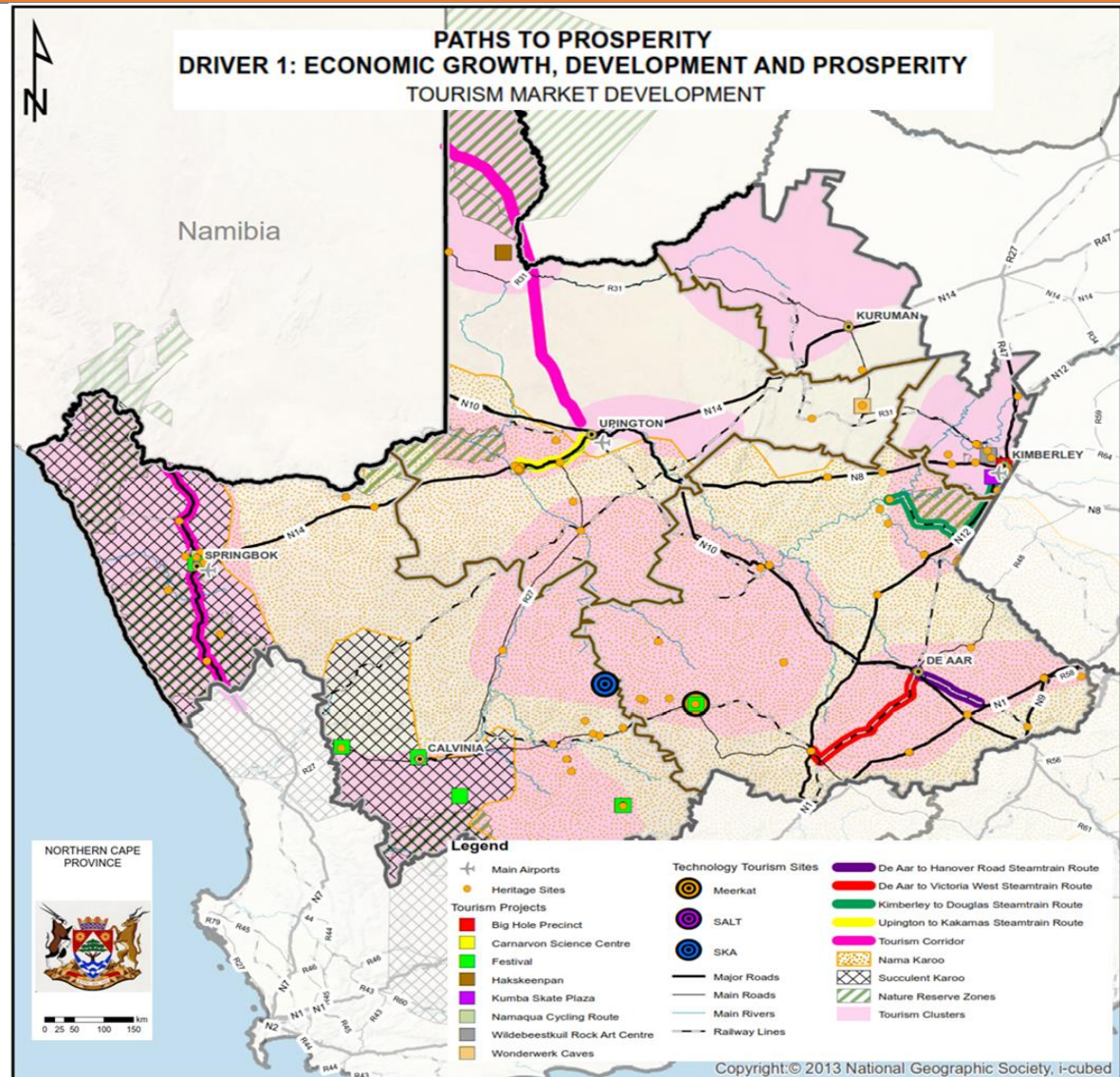
- Granted and accepted mining applications
- Areas marked for exploration
- Gamagara mining corridor
- Supporting transport infrastructure
- Locations of distressed mining towns
- Active mines



## PGDP Driver 1 alignment and coordination: Tourism market development

### DRIVER 1: ECONOMIC GROWTH, DEVELOPMENT AND PROSPERITY

#### PATH TO PROSPERITY: TOURISM MARKET DEVELOPMENT



In order to give effect and spatially represent the objective and associated strategies contained within the PGDP. The following data was utilised to develop the spatial representation.

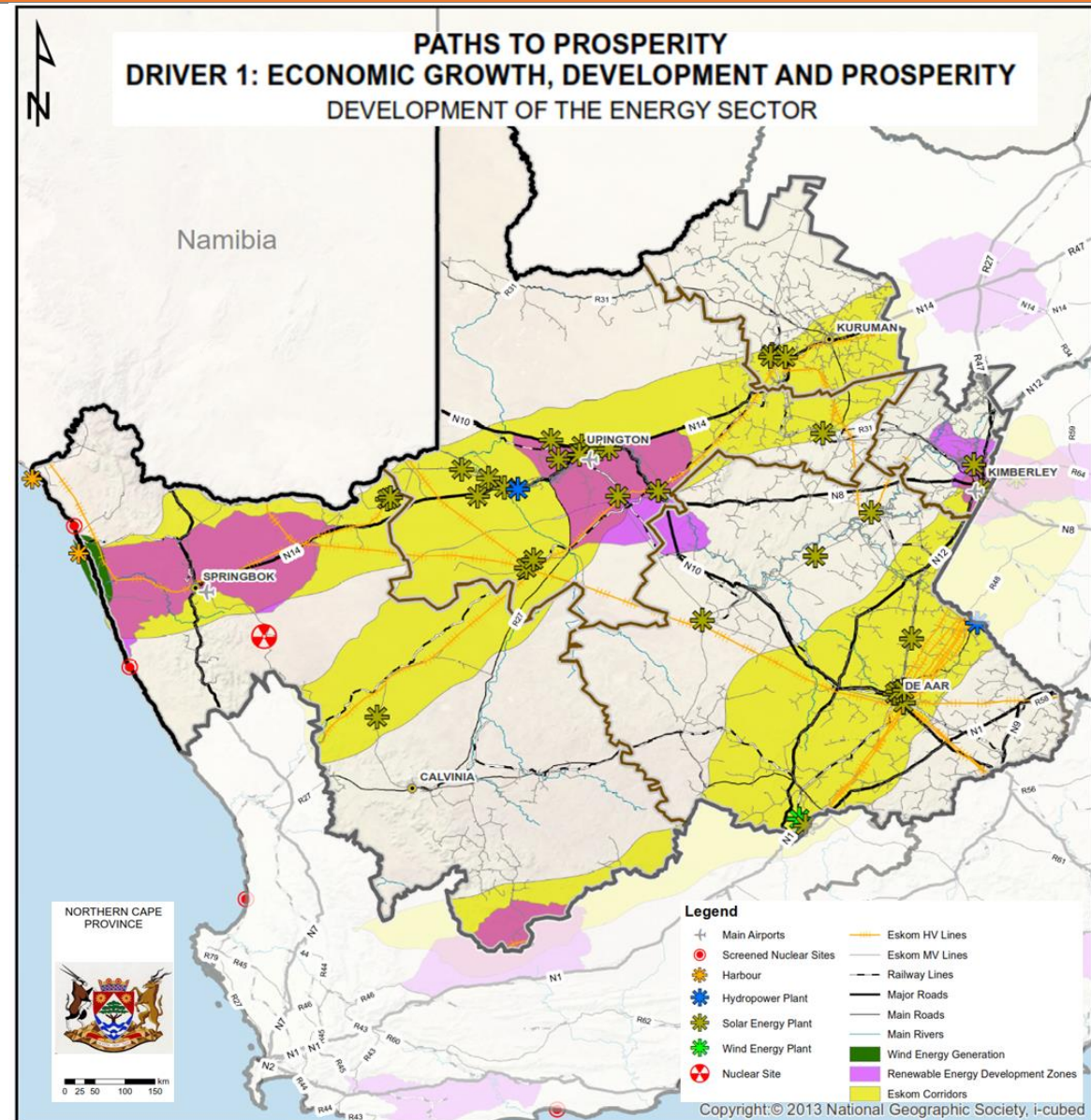
- Tourism clusters, routes and activities
- National Parks and Provincial Nature Reserves
- Karoo region Boundary (proposed Karoo Regional Spatial Development Framework)
- World Heritage Sites and Wildebeestkuil Rock Art Centre
- Namqualand Flowers region
- Orange and Vaal River Systems
- Meerkat, SALT, SARAO regions (Astronomy tourism)
- Vanderkloof Dam, Boegoeberg Dam
- Big hole precinct and Kumba skate Plaza
- Steam Train Initiative: Beaconsfiled Railway yard to Kimberley station and Upington to Kakamas
- Wonderwerk Caves
- Proposed Carnarvon Science Visitor Centre

- Haksteenpan Bloodhound Development
- Namaqua Coastal Cycling Route (Okiep)
- Festival locations (Calvinia, Tankwa Karoo Africa Burn, Springbok liggie fees, Carnarvon, Nieuwoudtville Bolplant Fees, Frasersburg Dinosaur festival)

PGDP Driver 1 alignment and coordination: Development of the Energy sector

## DRIVER 1: ECONOMIC GROWTH, DEVELOPMENT AND PROSPERITY

### PATH TO PROSPERITY: DEVELOPMENT OF THE ENERGY SECTOR



In order to give effect and spatially represent the objective and associated strategies contained within the PGDP. The following data was utilised to develop the spatial representation.

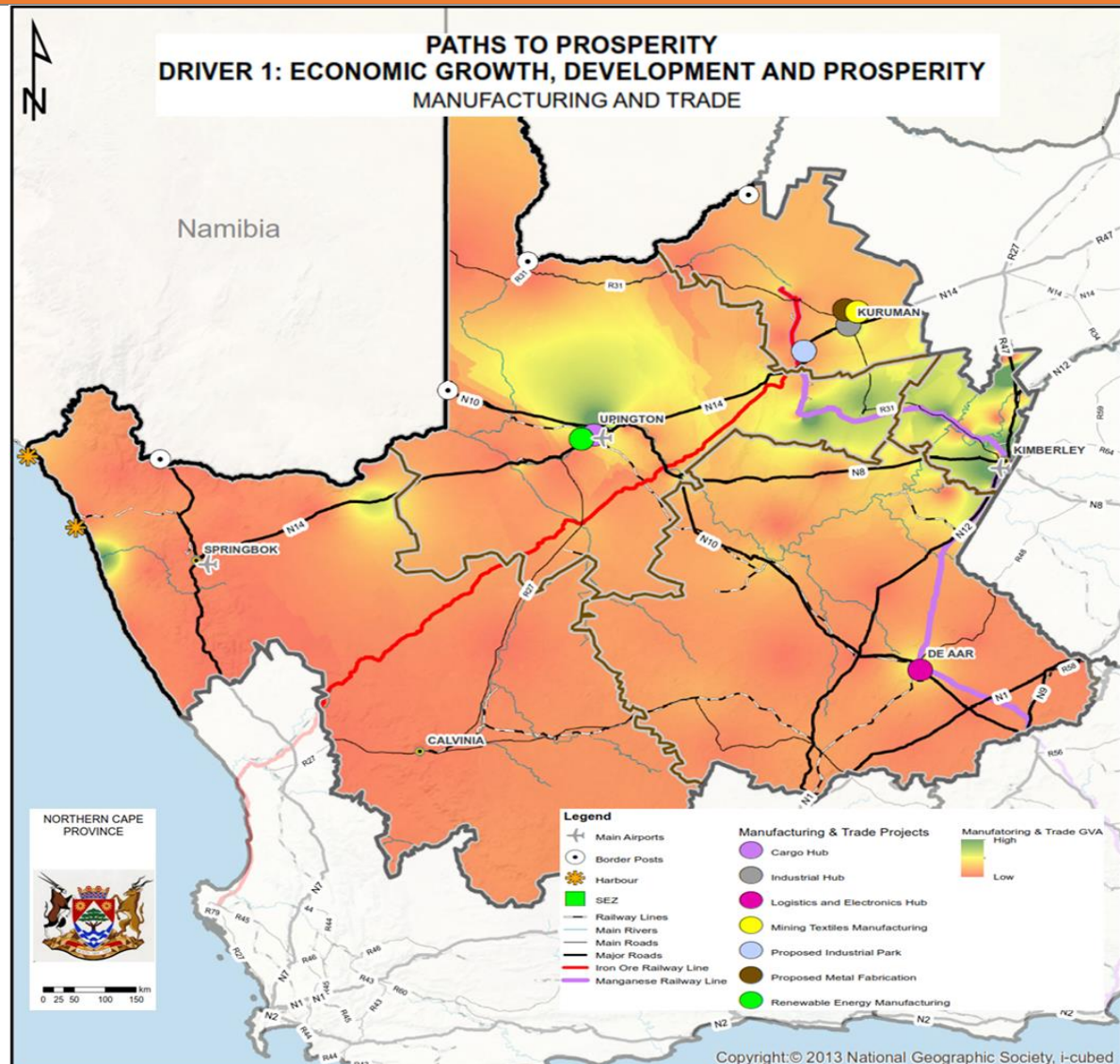
- Eskom solar Corridors
- Renewable Energy Development Zones (REDZ's)
- HV and MV Lines
- Nuclear Waste Facility
- IPP projects
- Screened Sites for Nuclear Power Stations



## PGDP Driver 1 alignment and coordination: Manufacturing and Trade

### DRIVER 1: ECONOMIC GROWTH, DEVELOPMENT AND PROSPERITY

#### PATH TO PROSPERITY: MANUFACTURING AND TRADE



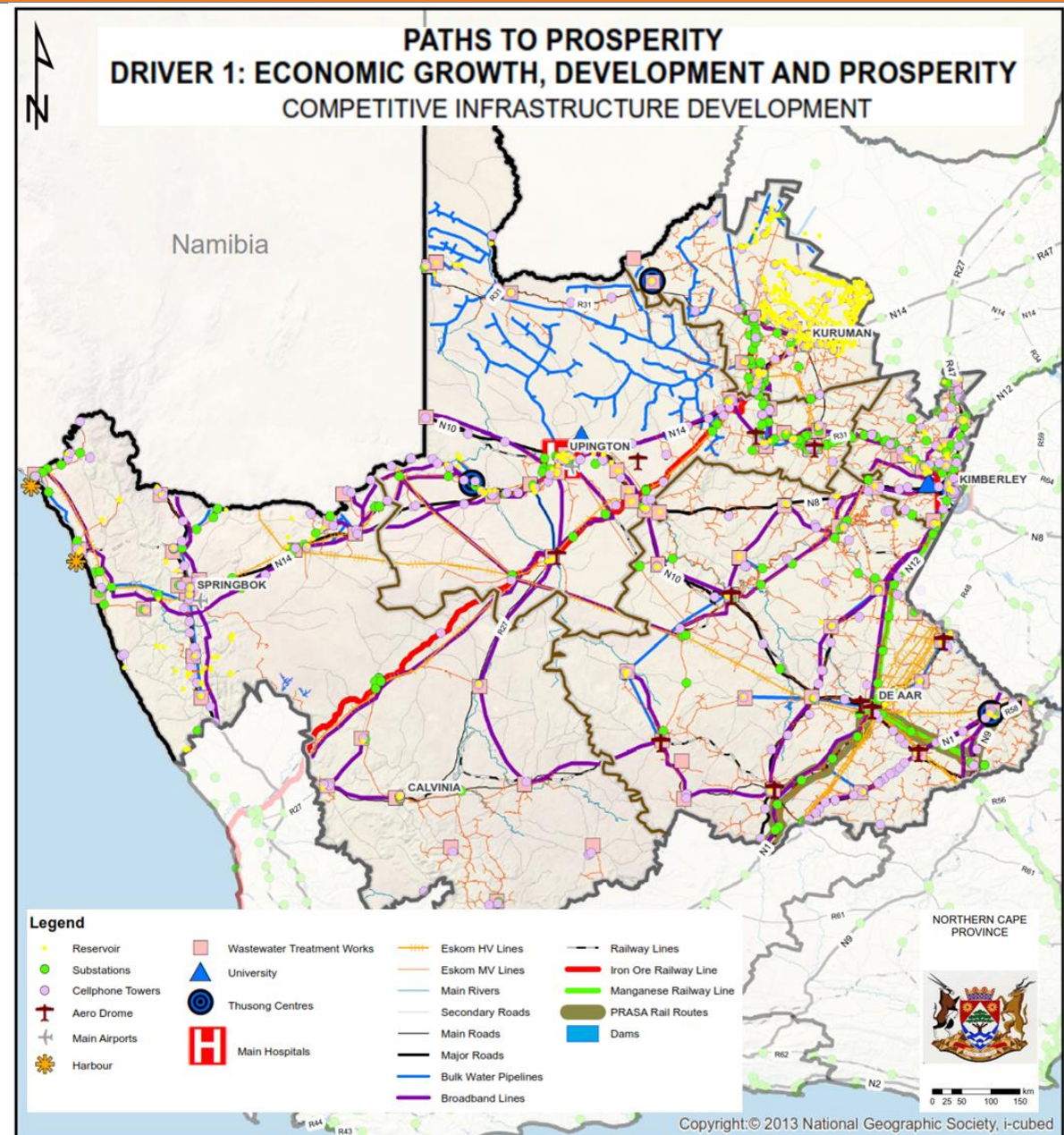
In order to give effect and spatially represent the objective and associated strategies contained within the PGDP. The following data was utilised to develop the spatial representation.

- Border Posts
- Manufacturing and Trade Mesozone GVA concentrations
- Railways system
- Upington Special Economic Zone (SEZ)
- Proposed Kathu Industrial Park
- Kuruman Industrial Hub
- Logistics and Electronics Hub (De Aar)
- Upington Cargo Hub
- Proposed Metal fabrication factory (Kuruman)
- Renewable Energy Manufacturing facility (Upington)
- Mining Textiles manufacturing (Kuruman)

## PGDP Driver 1 alignment and coordination: Competitive Infrastructure Development

### DRIVER 1: ECONOMIC GROWTH, DEVELOPMENT AND PROSPERITY

#### PATH TO PROSPERITY: COMPETITIVE INFRASTRUCTURE DEVELOPMENT



In order to give effect and spatially represent the objective and associated strategies contained within the PGDP. The following data was utilised to develop the spatial representation.

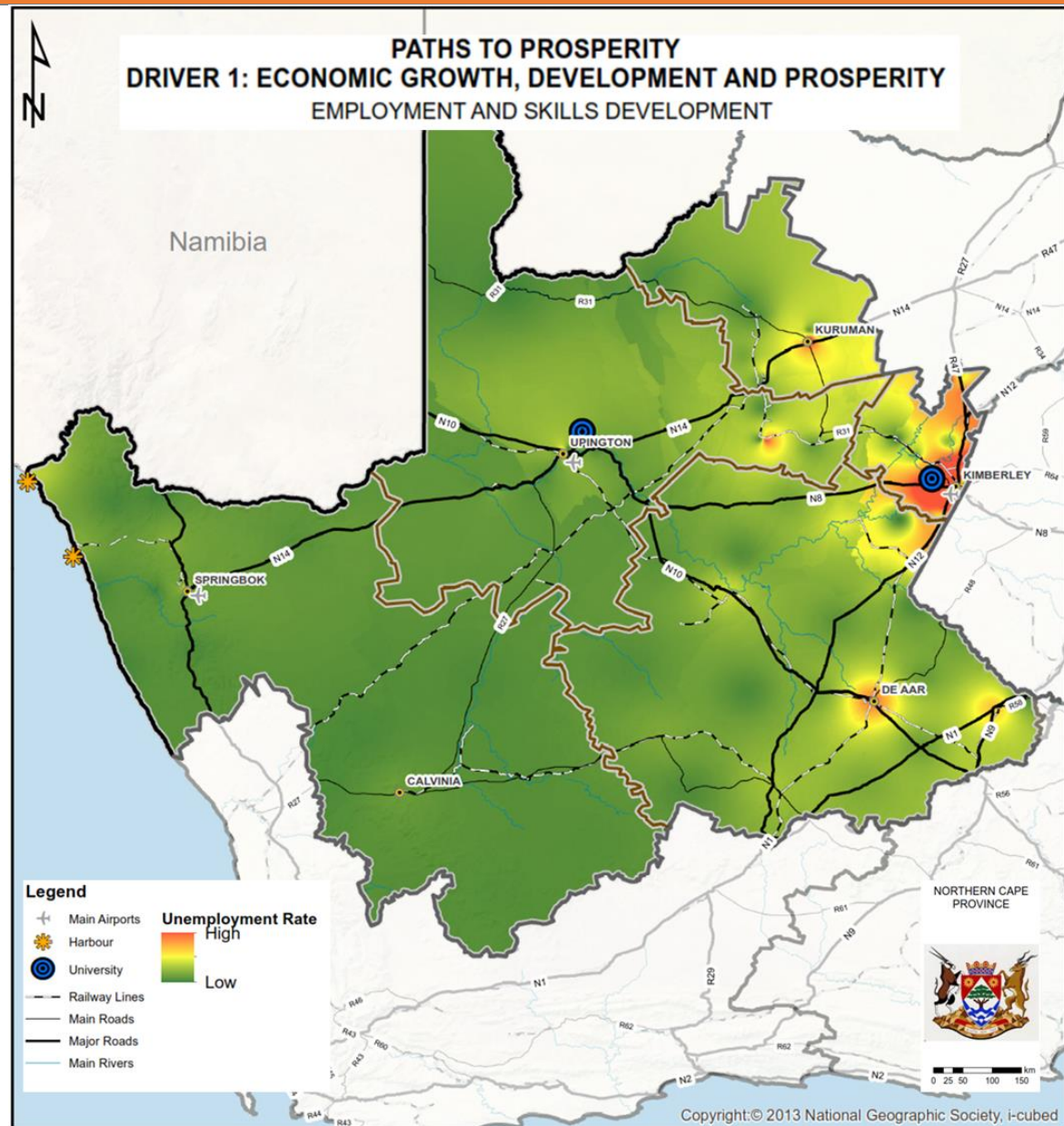
- Bulk infrastructure (Roads, Water and Electrical)
- Wastewater treatment works
- Health Infrastructure
- ICT Infrastructure
- Transport Infrastructure
- Dams/water storage infrastructure



## PGDP Driver 1 alignment and coordination: Employment and Skills development

### DRIVER 1: ECONOMIC GROWTH, DEVELOPMENT AND PROSPERITY

#### PATH TO PROSPERITY: EMPLOYMENT AND SKILLS DEVELOPMENT



In order to give effect and spatially represent the objective and associated strategies contained within the PGDP. The following data was utilised to develop the spatial representation.

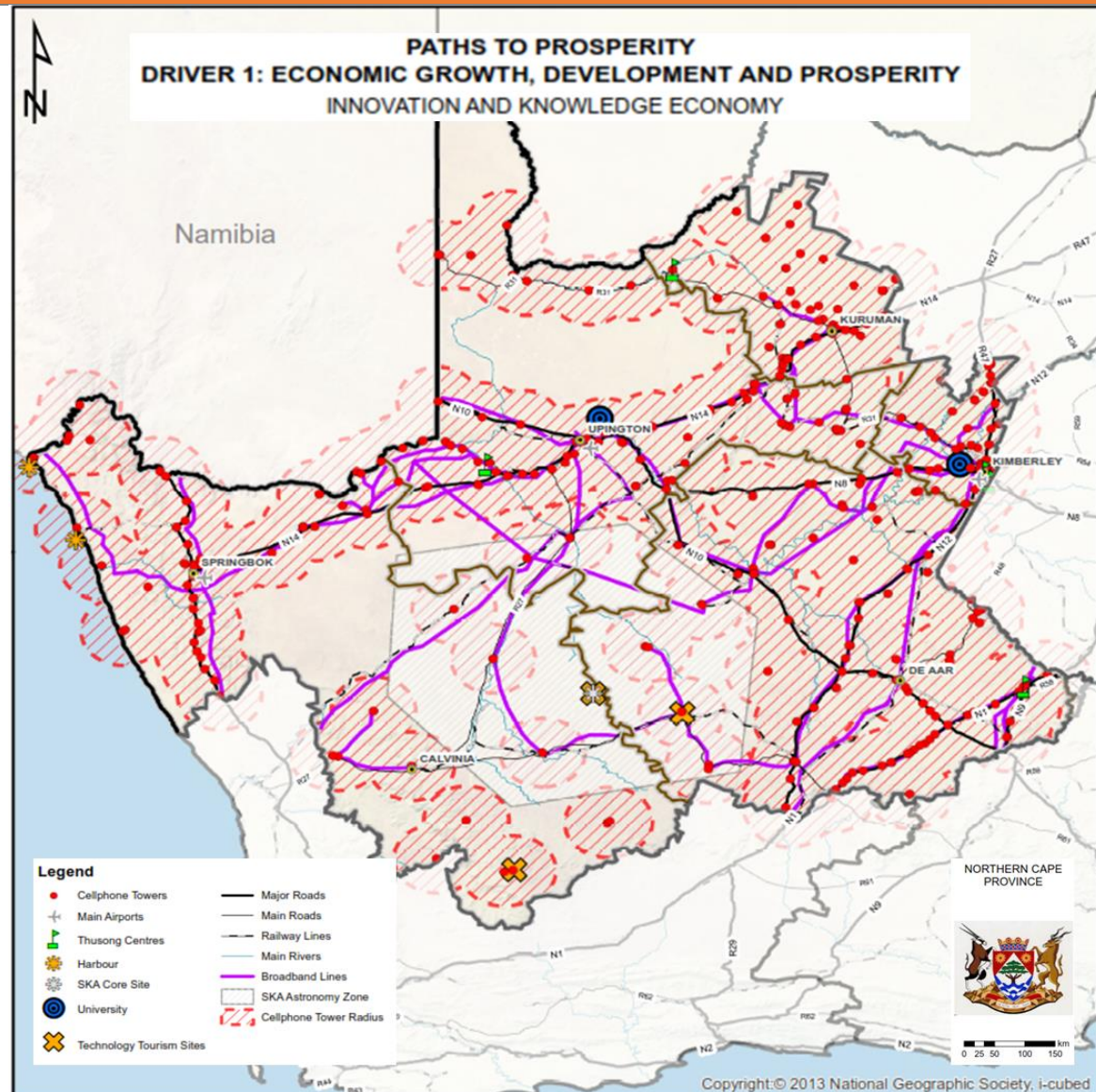
- University (Sol Plaatje)
- Concentration of unemployment



## PGDP Driver 1 alignment and coordination: Innovation and the Knowledge Economy

### DRIVER 1: ECONOMIC GROWTH, DEVELOPMENT AND PROSPERITY

#### PATH TO PROSPERITY: INNOVATION AND THE KNOWLEDGE ECONOMY



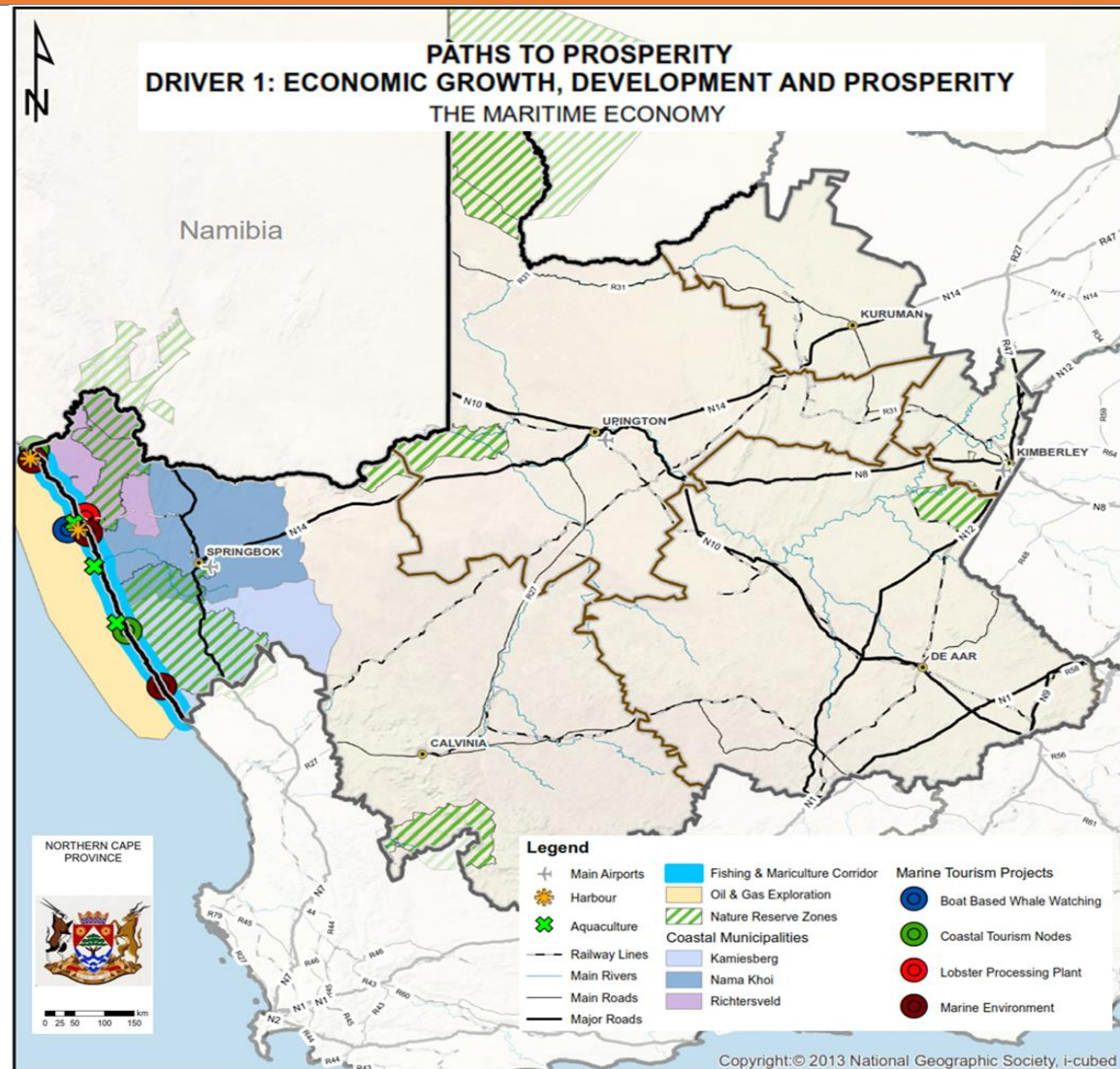
In order to give effect and spatially represent the objective and associated strategies contained within the PGDP. The following data was utilised to develop the spatial representation.

- SARA0 boundary and core site
- Broadband
- Cell phone towers (radius)
- Sol Plaatje University
- Thusong Centres
- Access to Internet
- Bloodhound initiative
- Science Tourism (SARA0, SALT)
- Planetarium (Carnarvon)

## PGDP Driver 1 alignment and coordination: the Maritime Economy

### DRIVER 1: ECONOMIC GROWTH, DEVELOPMENT AND PROSPERITY

#### PATH TO PROSPERITY: THE MARITIME ECONOMY



In order to give effect and spatially represent the objective and associated strategies contained within the PGDP. The following data was utilised to develop the spatial representation.

- Fishing and mariculture corridor
- Aquaculture (Operation Phakisa) – Port Nolloth and Kleinsee
- Offshore Gas
- Small harbours
- Marine Tourism
- National Parks
- Coastal Municipalities
- Lobster processing Plan
- Coastal tourism nodes
- Boat based whale watching
- Coastal mining



### DRIVER 2: SOCIAL EQUITY & HUMAN WELFARE

Driver 2 aims to unlock economic growth for those who are currently excluded (including the youth and vulnerable groups) and create an environment that is conducive to economic empowerment, entrepreneurship and self-enrichment. To achieve this, the following developmental themes have been identified:

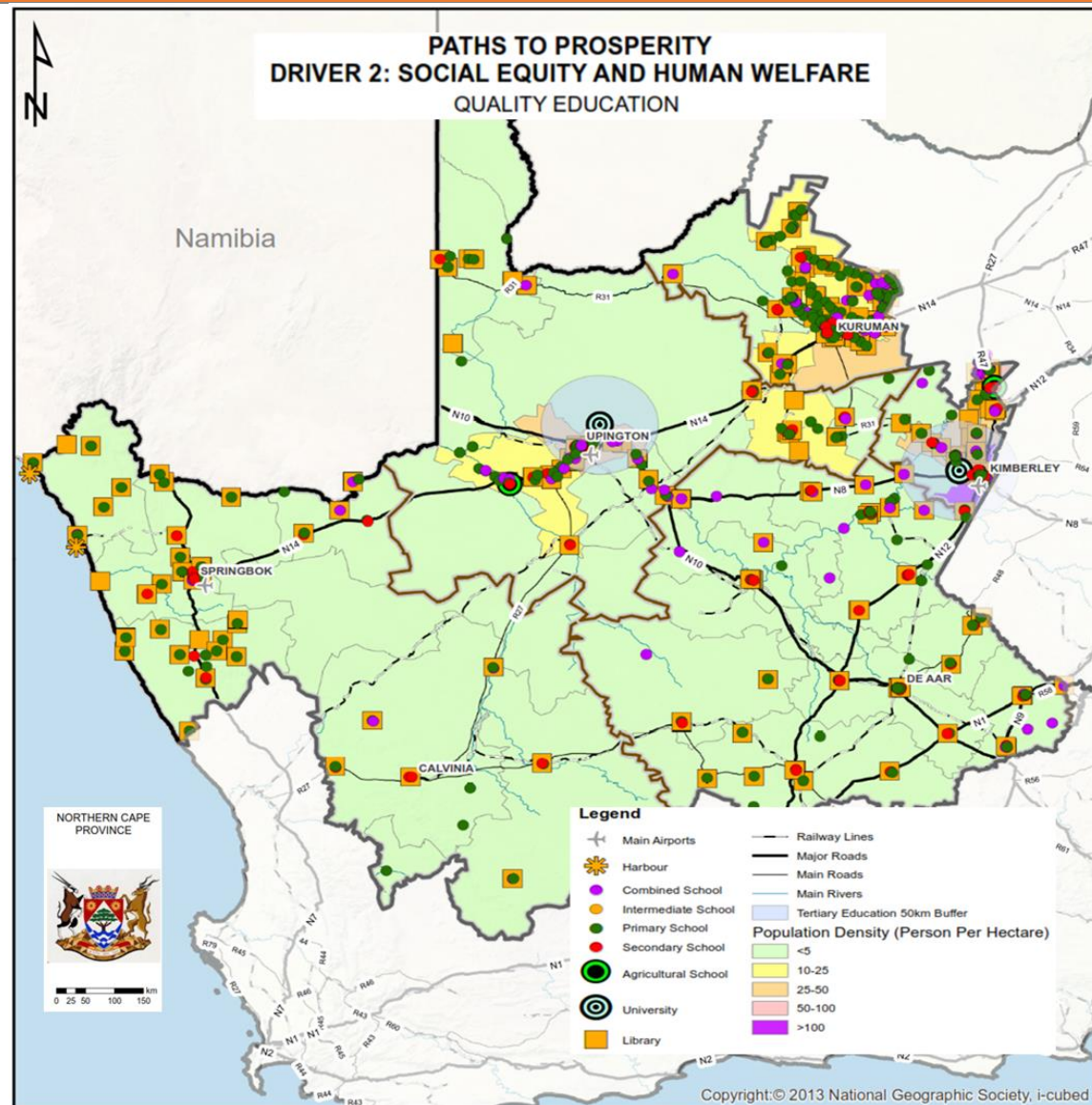
- Quality Basic Education;
- Social Cohesion and Community Participation;
- Social Protection and Safety;
- Health; and
- Rural Development, Land Reform and Food Security.

In order to align and complement the PGDP and provide a spatial representation of the proposals outlined within the PGDP the following data was utilised, as indicated by the table below, in order to determine the ideal and existing locations for the various projects and initiatives proposed by the PGDP.

PGDP Driver 2 alignment and coordination: Quality Basic Education

## DRIVER 2: SOCIAL EQUITY & HUMAN WELFARE

### PATH TO PROSPERITY: QUALITY BASIC EDUCATION



In order to give effect and spatially represent the objective and associated strategies contained within the PGDP. The following data was utilised to develop the spatial representation.

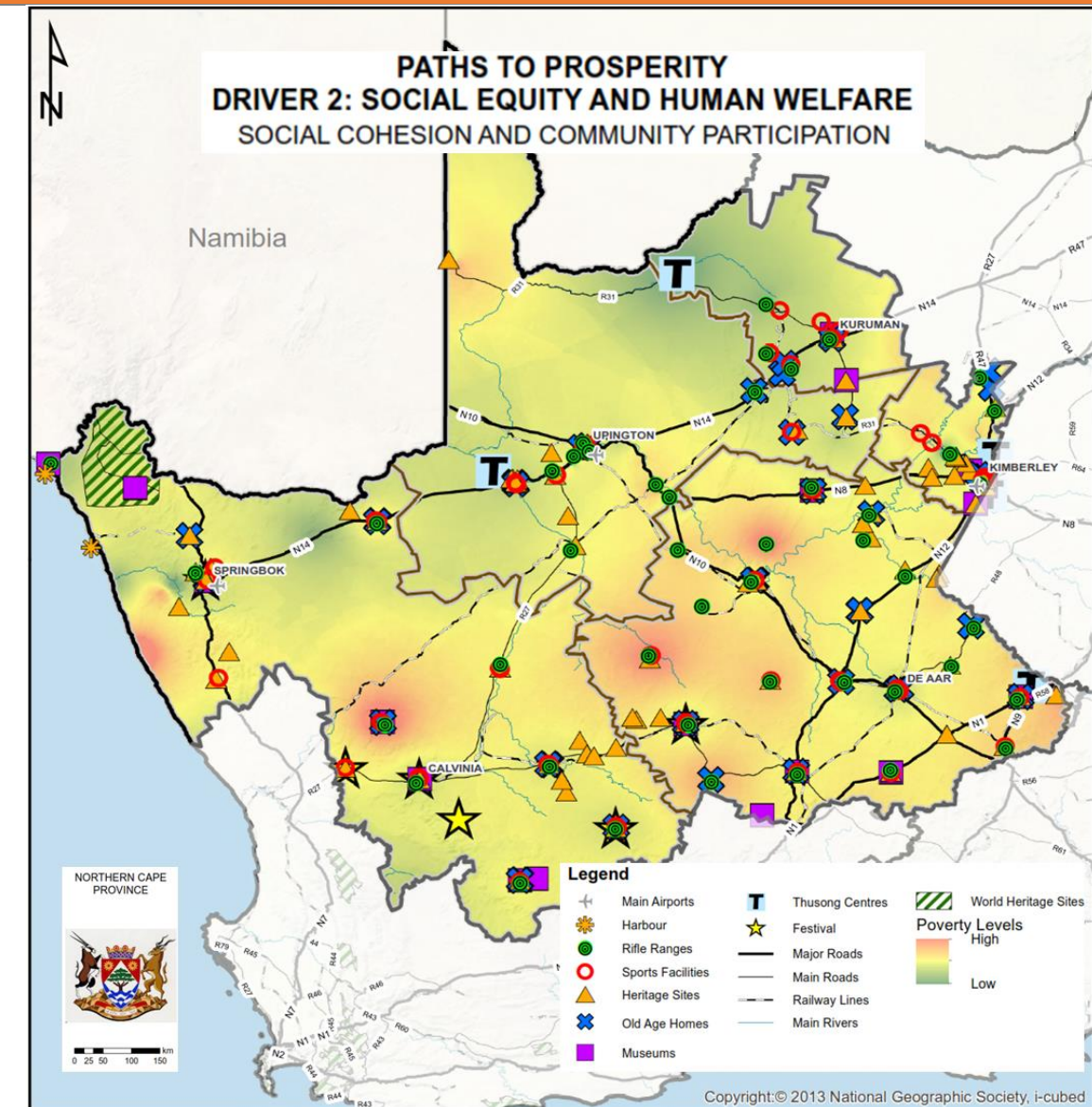
- FET, TVET Colleges
- Secondary Schools
- Primary Schools
- Special Schools
- Libraries
- Agricultural School
- Sol Plaatje University
- Settlement density



## PGDP Driver 2 alignment and coordination: Social Cohesion and Community Participation

### DRIVER 2: SOCIAL EQUITY & HUMAN WELFARE

#### PATH TO PROSPERITY: SOCIAL COHESION AND COMMUNITY PARTICIPATION



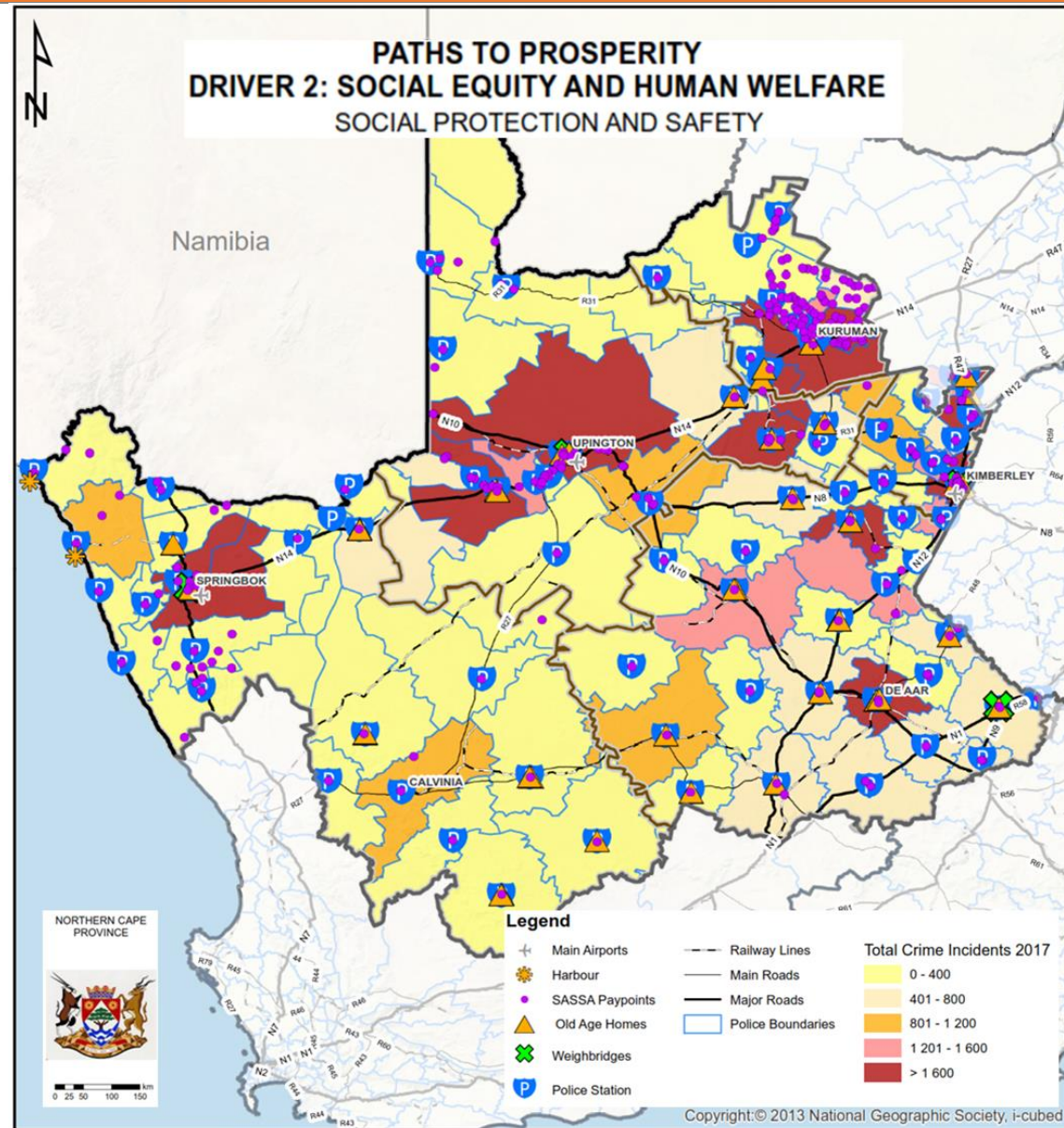
In order to give effect and spatially represent the objective and associated strategies contained within the PGDP. The following data was utilised to develop the spatial representation.

- Sport facilities
- Heritage sites
- Cultural Heritage sites
- Museums
- Poverty concentrations
- Old age homes
- Thusong Centres

## PGDP Driver 2 alignment and coordination: Social Protection and Safety

### DRIVER 2: SOCIAL EQUITY & HUMAN WELFARE

#### PATH TO PROSPERITY: SOCIAL PROTECTION AND SAFETY



In order to give effect and spatially represent the objective and associated strategies contained within the PGDP. The following data was utilised to develop the spatial representation.

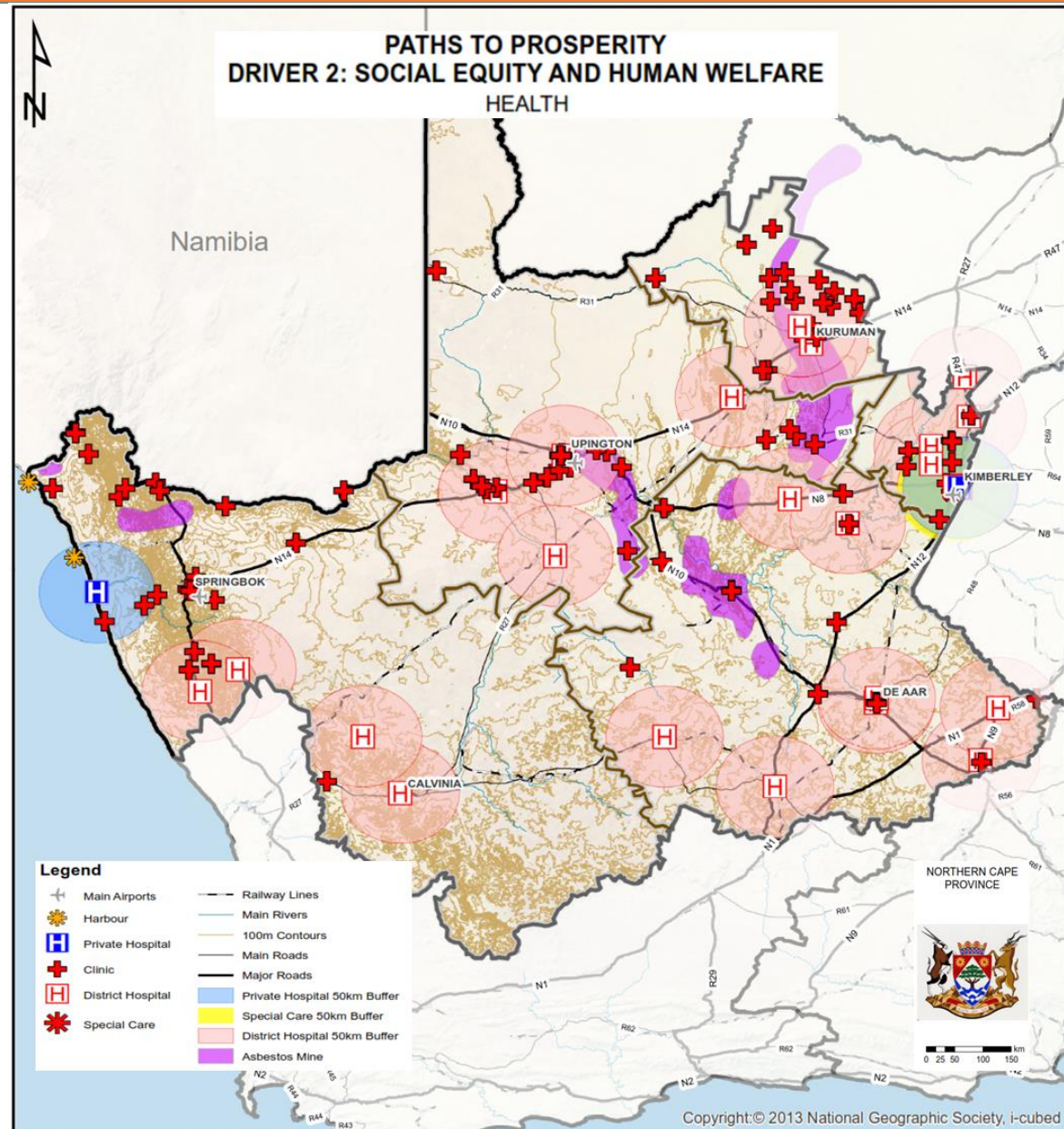
- Police regions
- Police Stations
- Total reported crimes per police district
- SASSA Offices
- Youth Centres
- Weigh bridges



## PGDP Driver 2 alignment and coordination: Health

### DRIVER 2: SOCIAL EQUITY & HUMAN WELFARE

#### PATH TO PROSPERITY: HEALTH



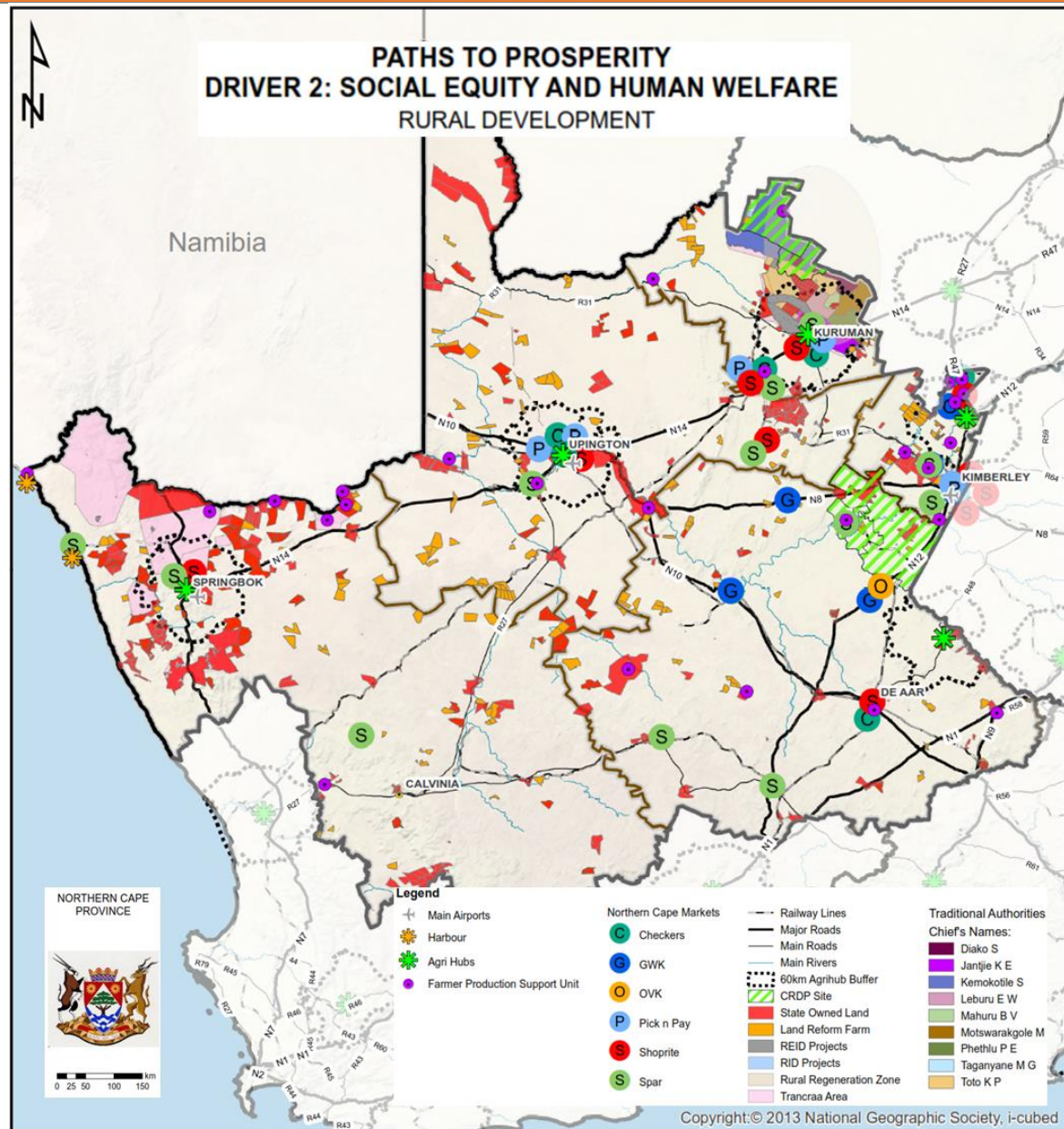
In order to give effect and spatially represent the objective and associated strategies contained within the PGDP. The following data was utilised to develop the spatial representation.

- Private hospitals
- District hospitals
- Clinics
- Special care centres
- Asbestos mines
- Transport routes

PGDP Driver 2 alignment and coordination: Rural development, Land Reform and Food Security

## DRIVER 2: SOCIAL EQUITY & HUMAN WELFARE

### PATH TO PROSPERITY: RURAL DEVELOPMENT, LAND REFORM AND FOOD SECURITY



In order to give effect and spatially represent the objective and associated strategies contained within the PGDP. The following data was utilised to develop the spatial representation.

- State owned land
- Land Reform Farm parcels
- DRDLR and DARDLR projects
- Agri-park projects
- TRANCRAA and Tribal Authority areas
- Grocery shopping centres



### DRIVER 3: ENVIRONMENTAL SUSTAINABILITY AND RESILIENCE

Driver 3 highlights the Northern Cape's abundance of natural resources and environmental assets. While these present a plethora of economic opportunities, a concerted effort must be made to ensure that these are protected and enhanced. At the same time, the Province must ensure that enough is done to protect communities against the potential threats of environmental harm and unsustainable resource exploitation. To achieve this, the following developmental outcomes have been identified:

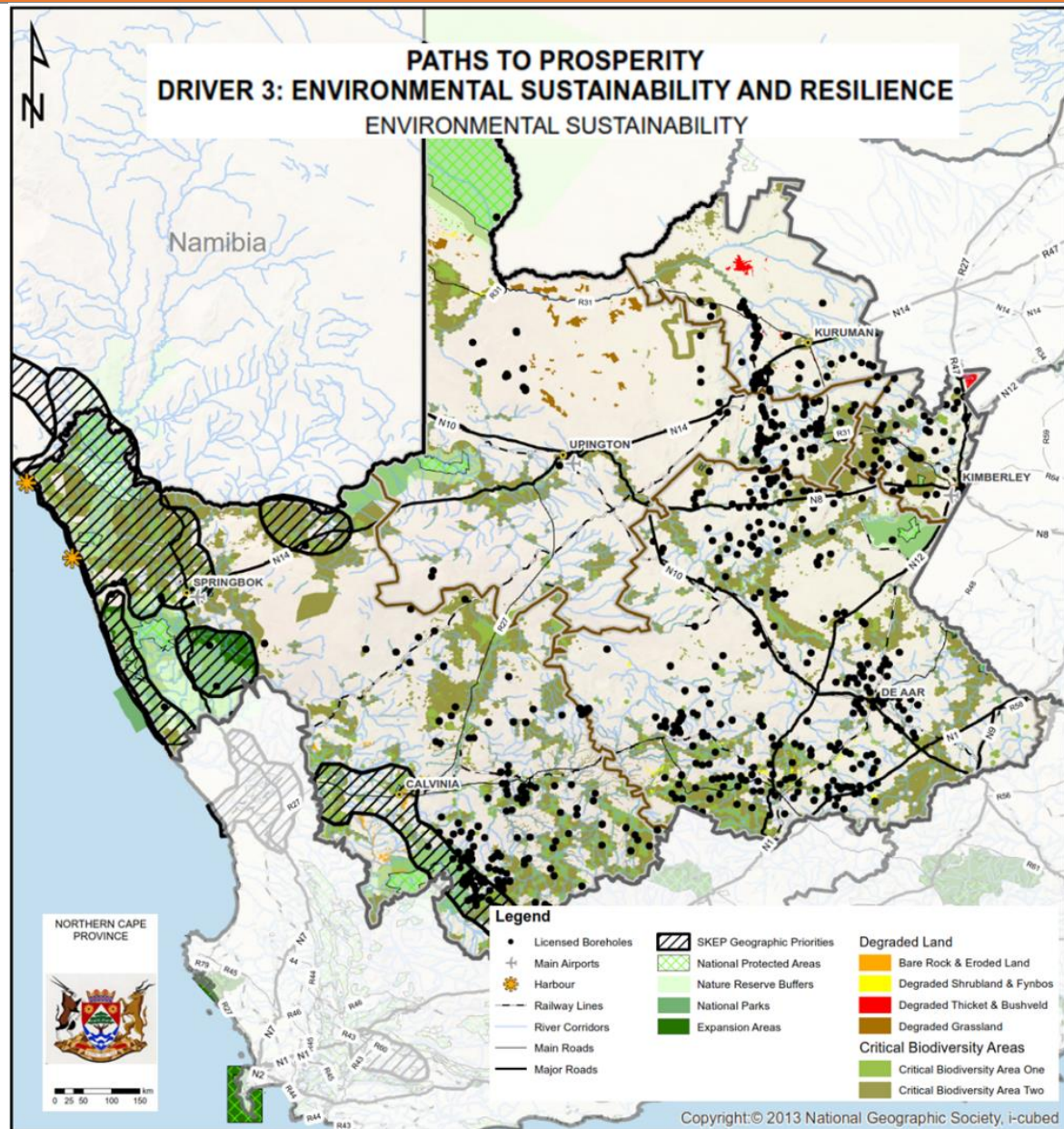
- Improving Environmental Sustainability; and
- Sustainable Human Settlements (incl. small towns).

In order to align and complement the PGDP and provide a spatial representation of the proposals outlined within the PGDP the following data was utilised, as indicated by the table below, in order to determine the ideal and existing locations for the various projects and initiatives proposed by the PGDP.

## PGDP Driver 3 alignment and coordination: Improving Environmental Sustainability

### DRIVER 3: ENVIRONMENTAL SUSTAINABILITY AND RESILIENCE

#### PATH TO PROSPERITY: IMPROVING ENVIRONMENTAL SUSTAINABILITY



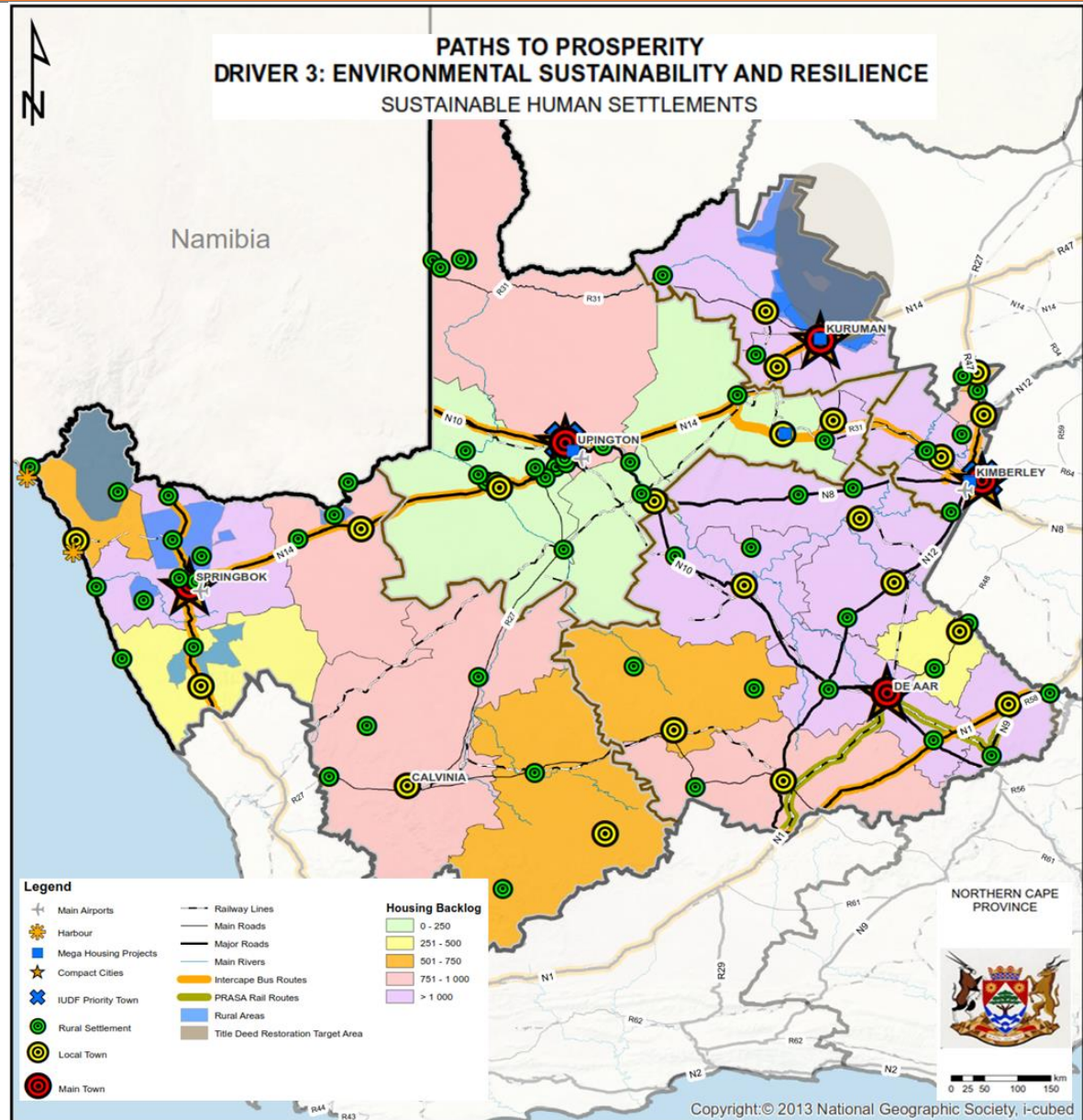
In order to give effect and spatially represent the objective and associated strategies contained within the PGDP. The following data was utilised to develop the spatial representation.

- National Parks
- Nature Reserves (Provincial)
- Critical Biodiversity areas
- Degraded land areas
- FEPA rivers
- SANParks/SANBI Expansion areas
- SKEP
- Boreholes



## PGDP Driver 3 alignment and coordination: Sustainable Human Settlements

### DRIVER 3: ENVIRONMENTAL SUSTAINABILITY AND RESILIENCE PATH TO PROSPERITY: SUSTAINABLE HUMAN SETTLEMENTS



In order to give effect and spatially represent the objective and associated strategies contained within the PGDP. The following data was utilised to develop the spatial representation.

- Main transport routes and infrastructure
- Mega housing projects
- Compact cities and IUDF Priority towns
- Rural Settlements
- Local Towns
- Main towns
- Public bus and rail routes
- Rural areas
- Title deed restoration target areas
- Housing backlogs

### DRIVER 4: ACCOUNTABLE & EFFECTIVE GOVERNANCE

Driver Northern Cape's Province need for a capable and accountable governance system, with the focus placed on streamlining inter-governmental relationships while strengthening participatory governance with civil society. To achieve this, the following developmental outcomes have been identified:

- Accountable Local Government;
- Development Orientated Public Services;
- Intergovernmental Relations; and
- Human Resource Development.

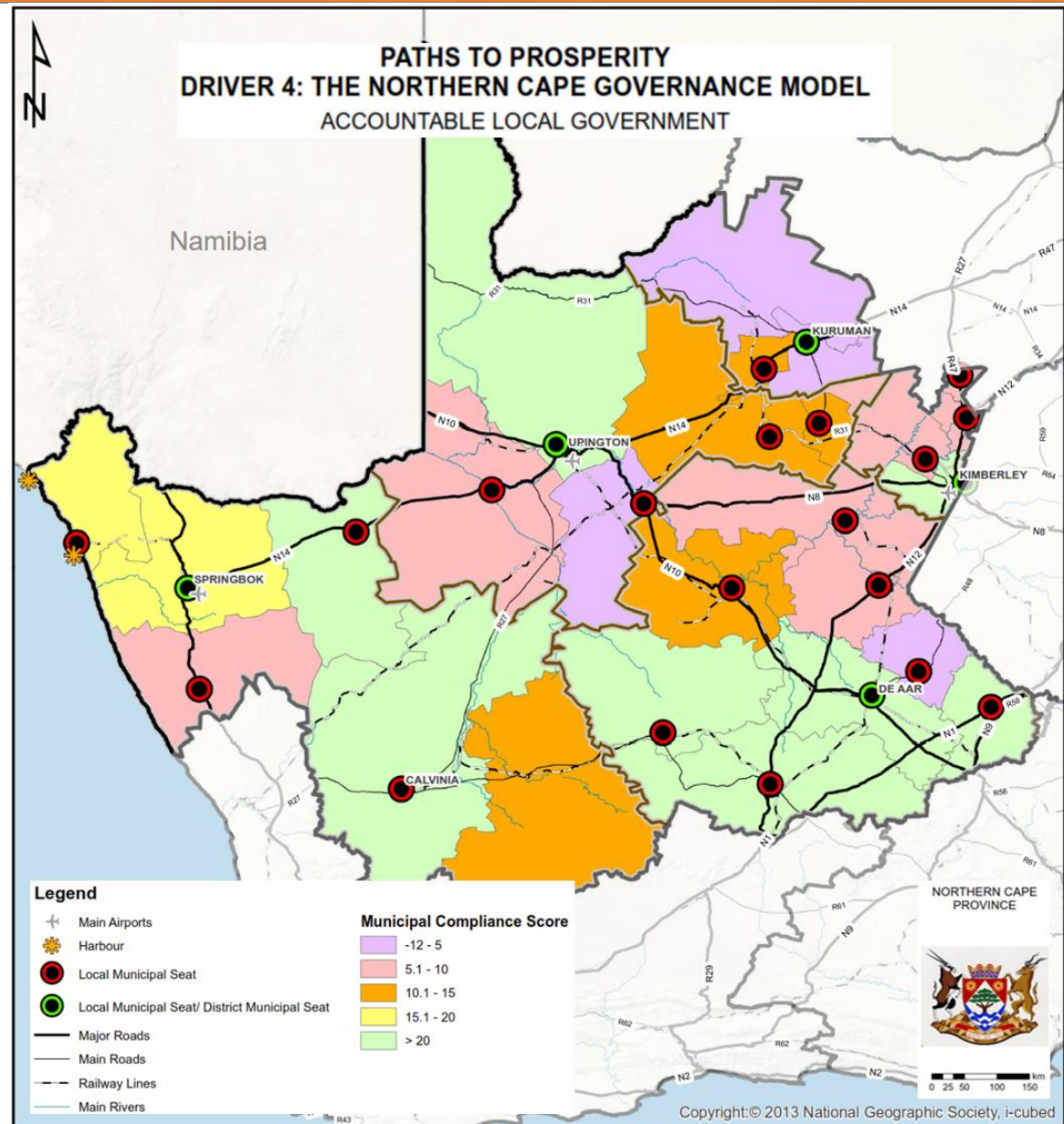
In order to align and complement the PGDP and provide a spatial representation of the proposals outlined within the PGDP the following data was utilised, as indicated by the table below, in order to determine the ideal and existing locations for the various projects and initiatives proposed by the PGDP.



## PGDP Driver 4 alignment and coordination: Accountable Local Government

### DRIVER 4: ACCOUNTABLE & EFFECTIVE GOVERNANCE

#### PATH TO PROSPERITY: ACCOUNTABLE LOCAL GOVERNMENT



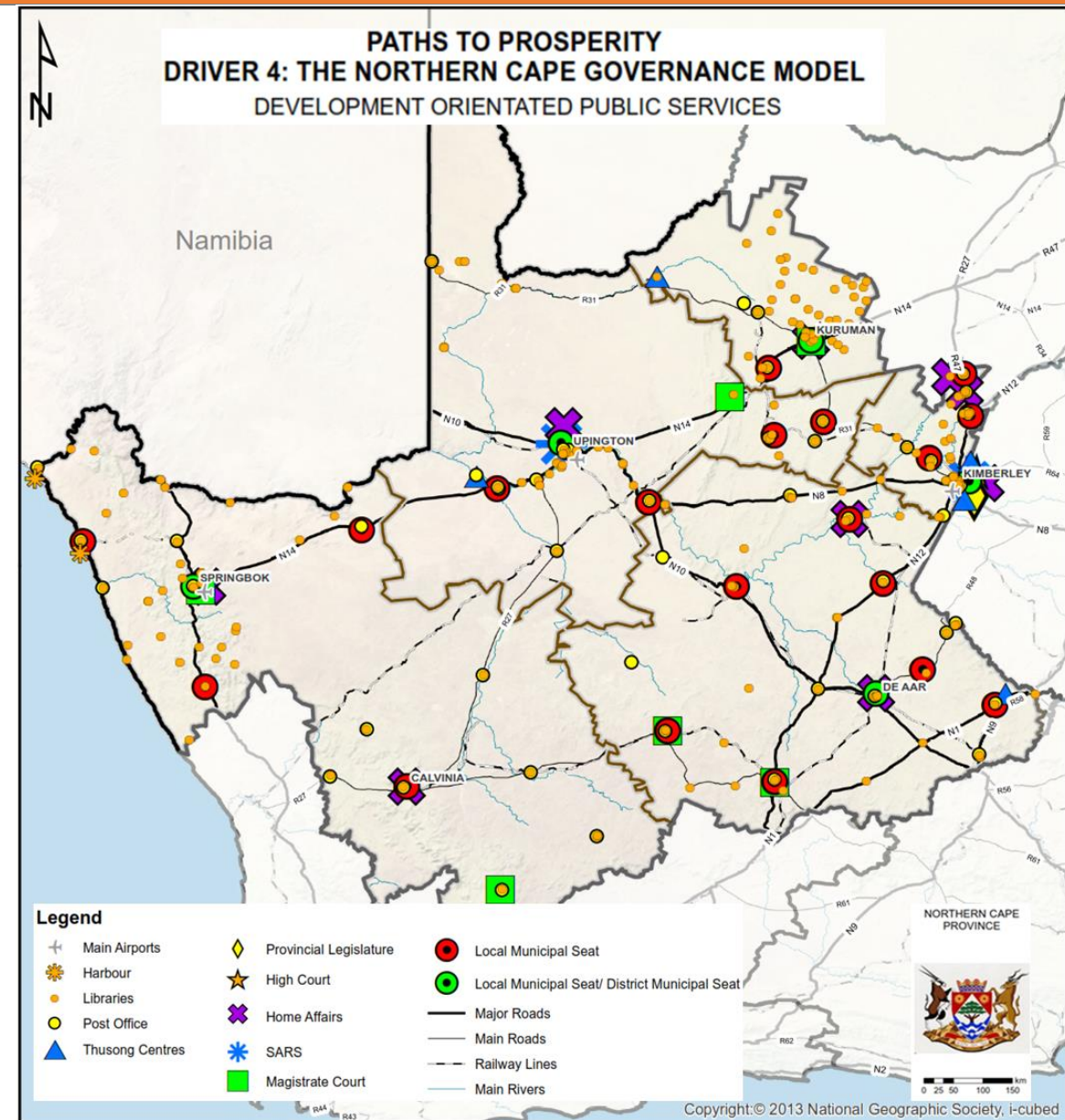
In order to give effect and spatially represent the objective and associated strategies contained within the PGDP. The following data was utilised to develop the spatial representation.

- Local Municipality Compliance Scores
- Local and District Municipal Seats

PGDP Driver 4 alignment and coordination: Development Orientated Public

## DRIVER 4: ACCOUNTABLE & EFFECTIVE GOVERNANCE

### PATH TO PROSPERITY: DEVELOPMENT ORIENTATED PUBLIC



In order to give effect and spatially represent the objective and associated strategies contained within the PGDP. The following data was utilised to develop the spatial representation.

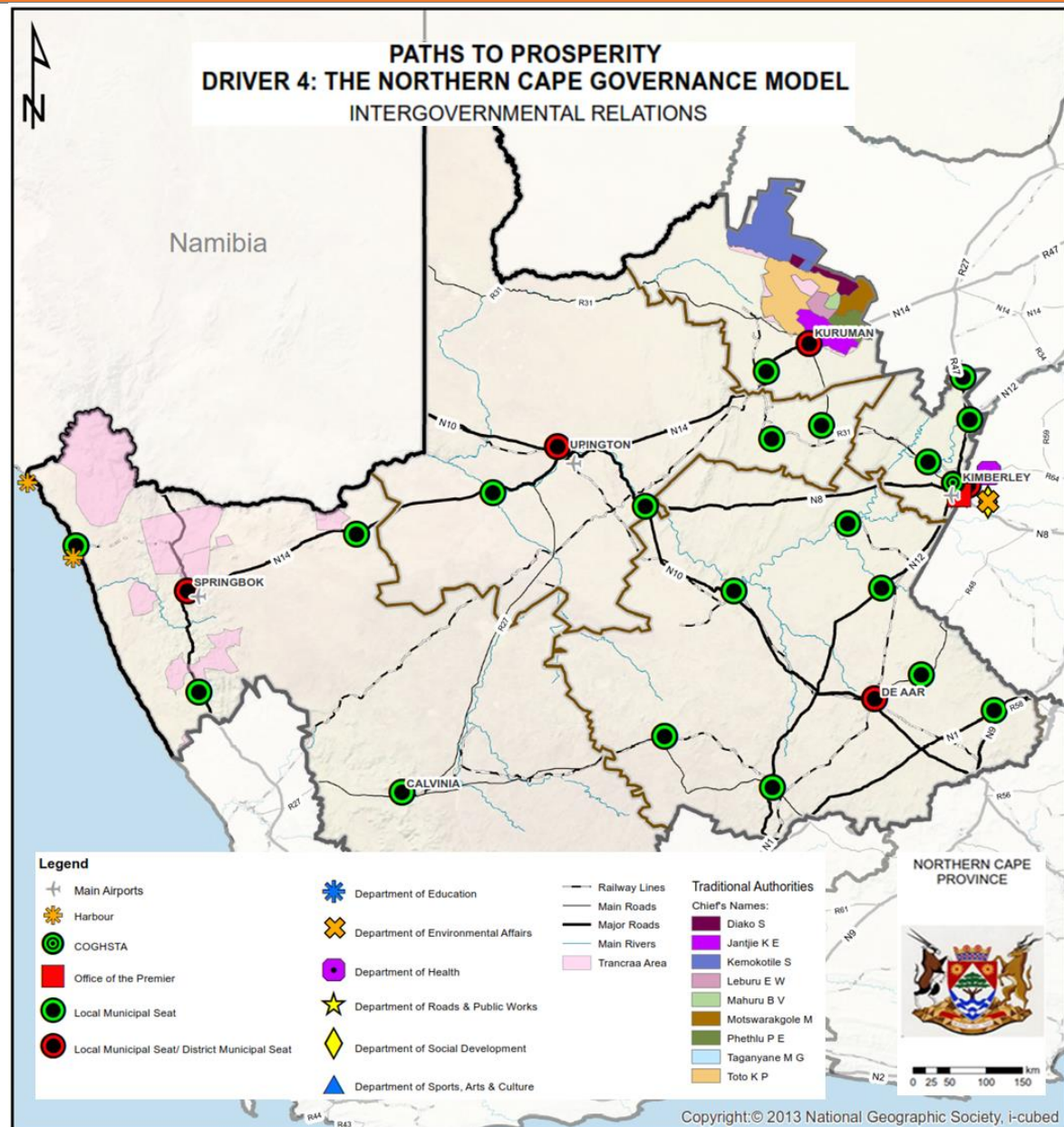
- Thusong Centres
- District seat (DM Offices)
- Local seat (LM Offices)
- Home Affairs Offices
- SARS Offices
- High Courts
- Magistrate Courts
- Provincial Legislature
- Post Offices
- Libraries



## PGDP Driver 4 alignment and coordination: Intergovernmental Relations

### DRIVER 4: ACCOUNTABLE & EFFECTIVE GOVERNANCE

#### PATH TO PROSPERITY: INTERGOVERNMENTAL RELATIONS



In order to give effect and spatially represent the objective and associated strategies contained within the PGDP. The following data was utilised to develop the spatial representation.

- Office of the Premier
- COGHSTA Offices and branches
- LM seat
- DM seat
- Sector Department offices and branches
- Traditional Areas
- TRANCRAA Areas