

# SPATIAL PROPOSALS



## NORTHERN CAPE PROVINCIAL SPATIAL DEVELOPMENT FRAMEWORK



+27 53 838 2600



info@ncpg.gov.za



<http://www.northern-cape.gov.za>



DSC Office Block C, Floor 1, 69 Memorial Road, Kimberley

# INTRODUCTION

## REVIEW OF THE NORTHERN CAPE PROVINCIAL SPATIAL DEVELOPMENT FRAMEWORK (PSDF)

### Introduction

The Northern Cape Provincial Spatial Development Framework (PSDF) serves as a pivotal document designed to guide the province's spatial planning and sustainable development. This phase of the PSDF outlines key spatial proposals that aim to steer responsible growth while balancing economic, environmental, and social imperatives. By translating policy directives into actionable strategies, the PSDF provides a blueprint for creating a resilient and prosperous Northern Cape. The framework incorporates forward-thinking principles such as planetary boundaries and bio-regional planning to ensure that development respects and preserves the province's unique natural and cultural heritage.

The PSDF's spatial vision is aligned with various strategic mandates, addressing both local and national objectives. This vision seeks to harmonize growth with sustainability, ensuring that the Northern Cape's rich resources are managed responsibly to benefit its people while maintaining ecological balance.

With a clear focus on translating high-level policy into practical spatial plans, the PSDF emphasizes the importance of maximizing land and resource use to support long-term economic prosperity, environmental protection, and community well-being. This framework ensures that strategic directives are effectively implemented, contributing to the Northern Cape's growth as a thriving, inclusive, and sustainable region.

The strategic proposals within the Northern Cape Provincial Spatial Development Framework (PSDF) are crafted to implement policy directives through sustainable development practices. These proposals emphasize responsible growth that carefully considers the potential environmental and social impacts, ensuring that development in the Northern Cape is economically viable, environmentally sound, and socially inclusive.





# REVIEW OF THE NORTHERN CAPE PROVINCIAL SPATIAL DEVELOPMENT FRAMEWORK (PSDF)

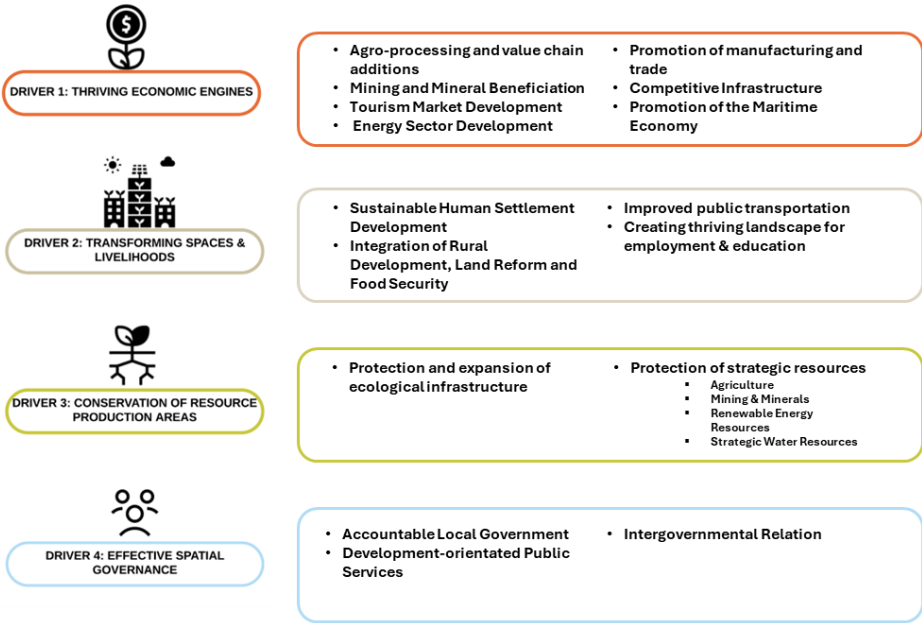
## PSDF Drivers

The Northern Cape Provincial Spatial Development Framework (PSDF) focuses on key drivers to promote sustainable development, aligned with the Provincial Growth and Development Plan (PGDP). These drivers coordinate public and private investments to achieve the province’s spatial vision.

- **Development Drivers:** Strategies that unlock the province’s potential by promoting economic growth, environmental stewardship, and social equity.
- **Spatial Outcomes:** Desired results of development initiatives, focusing on infrastructure, socio-economic growth, and environmental sustainability.
- **Action Areas:** Priority locations for high-impact projects that maximize positive outcomes.

This approach ensures targeted, sustainable development, balancing current needs with future opportunities.

## DRIVERS ➡ SPATIAL OUTCOMES



## ACTION AREAS



## PSDF DEVELOPMENT DRIVERS



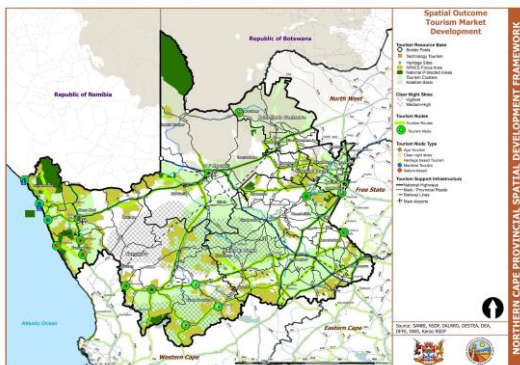


# PSDF DRIVERS

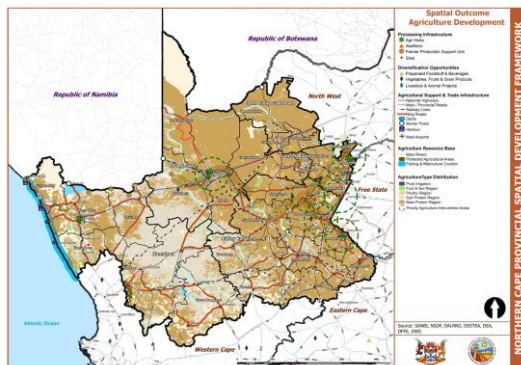


## DRIVER 1: THRIVING ECONOMIC ENGINES

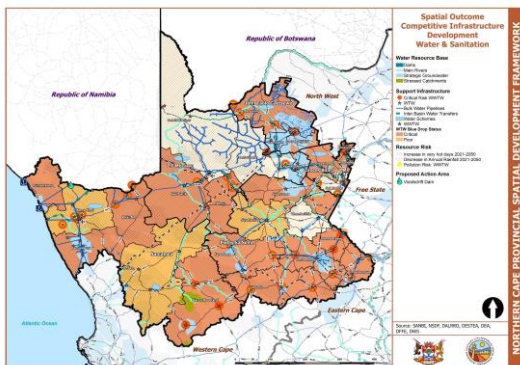
**DRIVER 1** aims to ensure economic growth that will lead to increased development and prosperity for the people of the Northern Cape Province, a conscious effort is required to change the economic trajectory of the province. To achieve this, the following developmental sectors have been identified by the



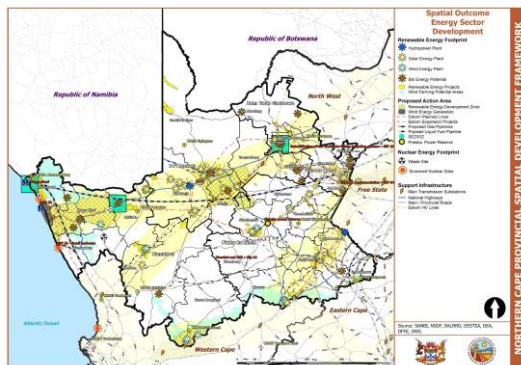
**Tourism Market Development**



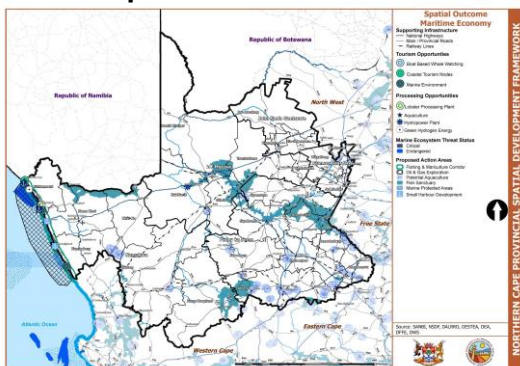
**Agriculture Development**



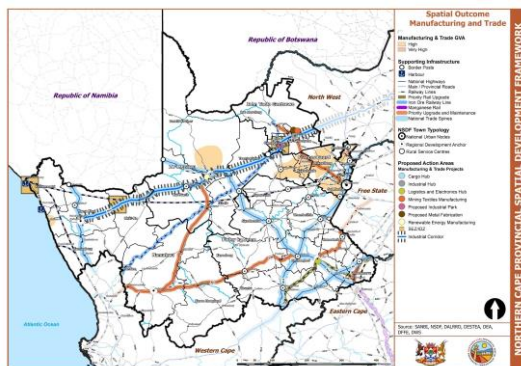
**Competitive Infrastructure**



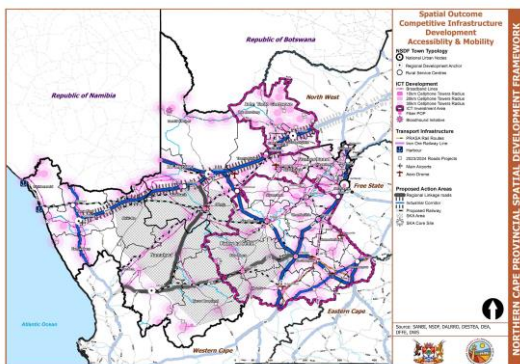
**Energy Sector Development**



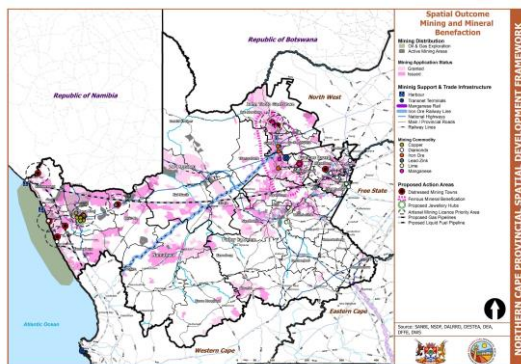
**Maritime Economy**



**Manufacturing and Trade**



**Accessibility and Mobility**



**Mining and Mineral Beneficiation**



# PSDF DRIVERS

[illegible][illegible]

## Employment & Education

### 3:

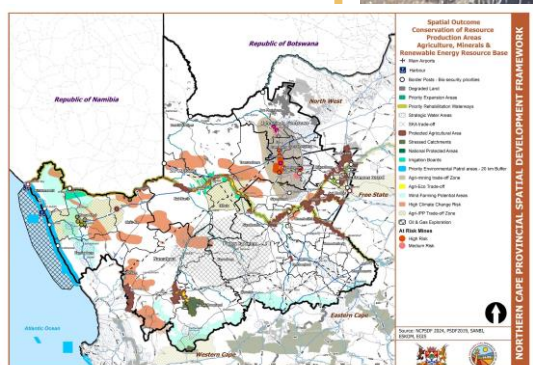
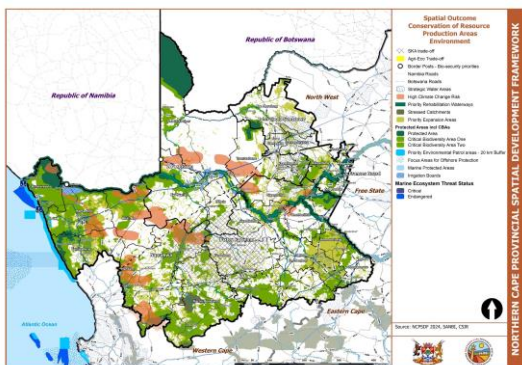
**Spatial Outcomes, Land Reform and Food Security**

- Agribusiness
- Farmer Production Support Unit
- Extensification
- Intensification
- Urban
- Water
- Water Access
- Acquiring Assets
- Medium-Density Residential
- High-Density Residential
- Transport Infrastructure
- Land Use Change Areas
- Land Use Change Risk
- Traditional Authorities

Source: NCPDP 2014, DAARD

**NORTHERN CAPE PROVINCIAL SPATIAL DEVELOPMENT FRAMEWORK**

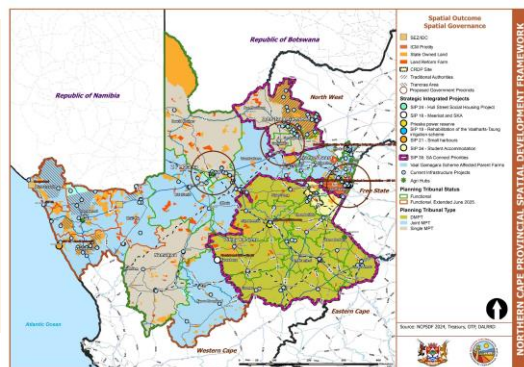
## Agriculture, Minerals and Renewable Energy Resources



## Environmental Resources



**DRIVER 4** refers to the need of a capable and accountable governance system, with a focus on streamlining inter-governmental relationships while strengthening participatory governance with civil society.



## PSDF COMPOSITE FRAMEWORK

The Northern Cape PSDF Composite Spatial Framework is structured around key elements:

The Northern Cape PSDF Composite Spatial Framework is structured around key elements that shape the province's development strategy. **Nodes** include settlement hierarchies, which identify economic hubs, large-scale catalytic projects that attract labor and resources, and crucial import/export nodes at border posts with Namibia and Botswana that require infrastructure and biosecurity upgrades.

**Zones** such as strategic groundwater areas, the Gamagara mining corridor, the Vaal-Orange agricultural zone, marine protected areas, and oil and gas exploration zones highlight areas of economic importance, resource conservation, and potential environmental risks.

**Corridors** such as the industrial corridor along the N14, the power corridor dependent on Eskom's grid capacity for renewable energy, national and regional trade routes, and a proposed trade route connecting Hotazel to Kimberley emphasize the importance of transport, logistics, and energy infrastructure in supporting economic growth and regional connectivity.

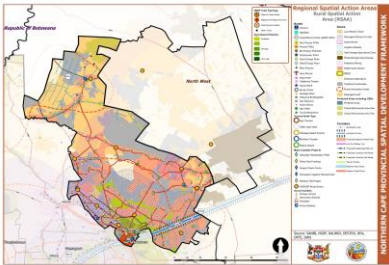
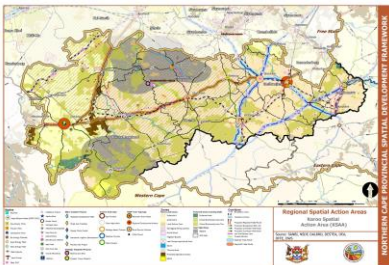
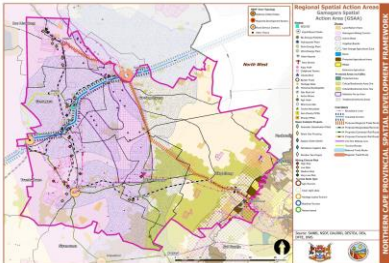
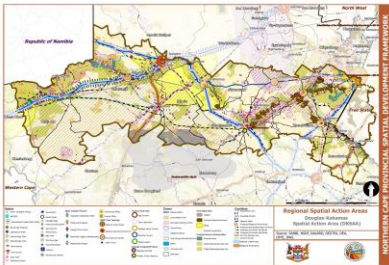
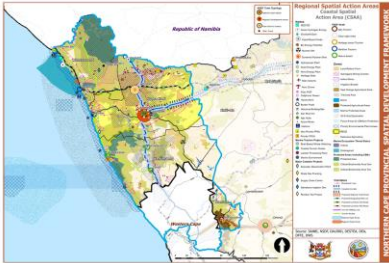




# PROVINCIAL SPATIAL ACTION AREAS (PSAAs)

The Northern Cape has identified six Provincial Spatial Action Areas (PSAAs) to address its unique development needs and align with national spatial goals. These areas aim to leverage local opportunities and mitigate risks, driving sustainable growth across key regions.

- 1. Coastal Spatial Action Area (CSAA):** Focus on sustainable coastal development, protecting ecosystems, promoting maritime and tourism industries, and enhancing infrastructure.
- 2. Douglas to Kakamas Spatial Action Area (DKSAA):** Optimize agriculture along the Orange River, promoting agro-industrial activities and improving water management and infrastructure.
- 3. Gamagara Spatial Action Area (GSAA):** Strengthen the mining sector by upgrading infrastructure and fostering local economic development while addressing environmental impacts.
- 4. Kalahari Spatial Action Area (KHSAA):** Promote renewable energy, sustainable tourism, and resilience in local communities through innovative water and land management.
- 5. Karoo Spatial Action Area (DSAA):** Focus on sustainable agriculture, agri-tourism, biodiversity protection, and renewable energy development.
- 6. Rural Spatial Action Area (RSAA):** Improve connectivity, service delivery, and support for small-scale farming to build resilient rural communities.
- 7. Vaalharts Spatial Action Area (VHSAA):** Prioritize agriculture, agro-processing, and mining while fostering energy solutions, adventure tourism, and heritage preservation.



## SPATIAL ACTION AREAS





# NORTHERN CAPE PROVINCIAL SPATIAL DEVELOPMENT FRAMEWORK

## CONCLUSION

The Northern Cape Spatial Proposal outlines a strategic framework for regional development that balances economic growth, social well-being, and environmental sustainability. By focusing on key drivers—Thriving Economic Engines, Transforming Spaces & Livelihoods, Conservation of Resource Areas, and Effective Spatial Governance—the proposal addresses the region's unique challenges and opportunities. Spatial structuring elements, such as corridors, nodes, and zones, ensure strategic development, while tailored interventions in each Provincial Spatial Action Area (PSAA) enhance sustainability, resilience, and connectivity. The proposal envisions a prosperous, inclusive, and forward-thinking future for the Northern Cape.

**“Enhancing our Future”**

<http://www.northern-cape.gov.za/index.php/psdf>



Province of the  
**Northern Cape**  
REPUBLIC OF SOUTH AFRICA



+27 53 838 2600



[info@ncpg.gov.za](mailto:info@ncpg.gov.za)



<http://www.northern-cape.gov.za>



DSC Office Block C, Floor 1, 69 Memorial Road, Kimberley