



# NC PSDF TOOLKIT 1 | SOCIAL SERVICES



Province of the  
**Northern Cape**  
REPUBLIC OF SOUTH AFRICA

## SOCIAL SERVICES TOOLKIT

The Social Services Wheel is an integral framework used in the National Spatial Development Framework (NSDF) and the Karoo Regional Spatial Development Framework (KRSDF). This framework assesses and prioritizes the provision and maintenance of social services across various town hierarchies, ensuring a rational allocation of facilities that support healthcare, education, community services, and more. The wheel helps in making informed decisions about where to place or upgrade these services to enhance accessibility and effectiveness across municipal boundaries.

For the Provincial Spatial Development Framework (PSDF) of the Northern Cape Province, the Social Services Wheel will be adopted with specific amendments to address regional needs more precisely. This tailored approach will ensure that the unique requirements of the Northern Cape are met, promoting sustainable development and improved service delivery.

### TOOLKIT INTENT

#### This Toolkit is to be Used to Guide:

- The standardisation of local and district Spatial Development Frameworks (SDFs) in identifying social services and needs for towns in the Northern Cape, supporting the uniformity of SDFs in the future.
- Key sector departments, such as Social Development, Health, Education, Police, and Transport, as well as other key role players, in understanding the needs of various towns in pursuit of the Social Services Wheel adopted in the National Spatial Development Framework (NSDF).
- The provision of social services thresholds for spatial and land use planning requirements in the province.

## COPYRIGHT, DATA, AND DATA USE DISCLAIMERS

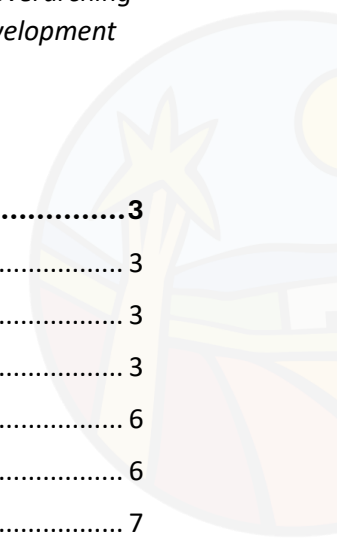
*The Northern Cape Spatial Development Framework (PSDF) is the intellectual property of the Northern Cape Office of the Premier, the Department of Agriculture, Land Reform and Rural Development (DALRRD), and the Maswana Group of Companies.*

*While every effort has been made to ensure the accuracy and reliability of the data and information within the TOOLKIT, the Northern Cape Office of the Premier, DALRRD, and the Maswana Group of Companies do not guarantee the completeness or accuracy of the data and information. Users are advised to verify the information independently before making any decisions based on the data or information provided.*

*The TOOLKIT should be read in conjunction with the specific Driver and Spatial Outcomes as proposed in the PSDF as well as the CSIR guidelines for Social Amenities as referend. This comprehensive approach ensures that the planning and development initiatives align with the overarching goals of the PSDF, fostering coordinated and sustainable development throughout the Northern Cape Province.*

## CONTENTS

<b>1</b>	<b>INTRODUCTION</b> .....	<b>3</b>
1.1	SOCIO ECONOMIC SERVICES GUIDELINES .....	3
1.1.1	Adaptation for the Northern Cape .....	3
1.1.2	Northern Cape-Specific Guidelines .....	3
1.2	SOCIAL SERVICES WHEEL .....	6
1.2.1	Indicators of the Social Services Wheel.....	6
1.2.2	Implications for Various Indicators .....	7
1.2.3	Requirements per Town Category .....	8



# 1 INTRODUCTION

## 1.1 SOCIO-ECONOMIC SERVICES GUIDELINES

Facility location planning standards, access guidelines, and threshold norms are essential elements of strategic planning. They are used to allocate and reserve land for specific uses and facilities and to develop capital budget plans within a planning area. This is particularly crucial for community-type facilities, including those provided by both the public sector and private developers. These guidelines aid in the planning of social facilities but are not legally prescriptive or binding.

In long-term planning, access standards, threshold guidelines, and site sizes are increasingly important to ensure that sufficient land is reserved for essential facilities in line with future growth and development, without being wasteful or encouraging the illegal use of underdeveloped land. Standards and guidelines, by providing predefined spatial norms, ideally facilitate a more equitable provision of services and facilities to diverse communities. However, these standards and guidelines should always be adapted to the local contextual conditions of each city, district, suburb, and neighbourhood.

### 1.1.1 ADAPTATION FOR THE NORTHERN CAPE

The Northern Cape Province faces unique challenges and distances that must be considered when planning for social amenities. Aligning to the needs and requirements based on the adapted PSDF Social Services Wheel requirements for towns in the Northern Cape, the following points are crucial:

- The low population density is evident in most of the large towns and small towns.
- Provision is not made for very small towns and villages, including remote villages

**SOURCE:** *(click on the link to access the source)*

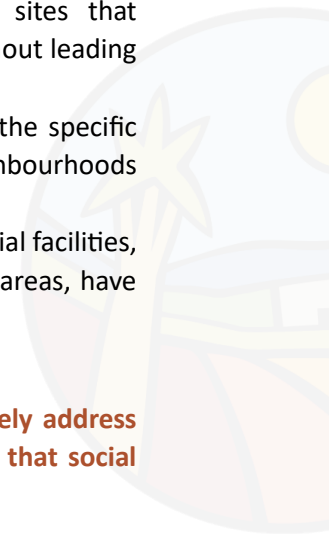
[CSIR GUIDELINES FOR THE PROVISION OF SOCIAL FACILITIES IN SOUTH AFRICAN SETTLEMENTS](#)

### 1.1.2 NORTHERN CAPE-SPECIFIC GUIDELINES

The guidelines provided by the CSIR for the provision of social facilities in South African settlements offer a valuable framework. Adapting these for the Northern Cape involves considering the province's unique geographical and demographic characteristics:

- **Accessibility Standards:** Ensure that social facilities are accessible within reasonable travel distances, considering the vast distances between settlements in the Northern Cape.
- **Threshold Norms:** Set realistic threshold norms for the establishment of social facilities, acknowledging the low population densities and ensuring that facilities are viable and sustainable.
- **Site Size Requirements:** Plan for appropriately sized sites that accommodate future growth and development needs without leading to underutilised or illegally occupied land.
- **Local Adaptation:** Customise facility standards to reflect the specific needs and contexts of different towns, districts, and neighbourhoods within the Northern Cape.
- **Equitable Provision:** Strive for equitable distribution of social facilities, ensuring that all communities, including those in remote areas, have access to essential services.

**By adopting these adapted guidelines, planners can effectively address the unique challenges of the Northern Cape while ensuring that social facilities meet the needs of its diverse communities.**



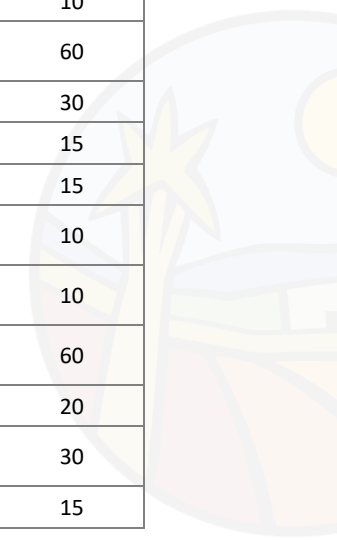
**Table 1: Social Facility Requirements: Large City(ies)**

LARGE CITIES	Threshold	Area Required (sqm)	Travel Distance (km)
<b>Education</b>			
Crèche, Nursery- & Pre-primary School	1 per 5,000 people	50 sqm per 45 Children	2
Primary School	1 per 10,000 people	24 000 sqm	5
Secondary / High School	1 per 15 000 people	46 000 sqm	5
<b>Health</b>			
Primary Health Clinic	1 per 30,000 people	1000 sqm	5
District Hospital	1 per 200 000 people	15 000 sqm	60
Community Health Care Centre	1 per 100,000 people	10 000 sqm	20
<b>Community Services</b>			
Religious centres	1 per 2,000 people	1500 sqm	5
Regional Library	1 per 100,000 people	500 sqm	30
Community Hall	1 per 10,000 people	5000 sqm	10
Fire station/emergency services	1 per 60 000 people	12 000 sqm	30
Police Station	1 per 50,000 people	2500 sqm	15
Post Office	1 per 20,000 people	500 sqm	15
Thusong Centre	1 per 100,000 people	10 000 sqm	20
Municipal offices/pay points	1 per 50,000 people	3000 sqm	15
Community Information centres	1 per 20,000 people	100 sqm	15
University	1 per 200 000 people	20 000 sqm	400
FET or Tertiary Training College	1 per 50,000 people	50 000 sqm	60
Indoor Sport Facility	1 per 100,000 people	5000 sqm	20
Multipurpose Sports Complex	1 per 200 000 people	50 000 sqm	30
District Park	1 per 100,000 people	5000 sqm	15

**Table 2: Social Facility Requirements: Regional Service Centres**

REGIONAL SERVICE CENTRES	Threshold	Area Required (sqm)	Travel Distance (km)
<b>Education</b>			
Crèche, Nursery- & Pre-primary School	1 per 5,000 people	50 sqm per 45 Children	2
Primary School	1 per 8,000 people	24 000 sqm	5
Secondary / High School	1 per 12 500 people	46 000 sqm	5
<b>Health</b>			
Primary Health Clinic	1 per 10,000 people	1000 sqm	5
District Hospital	1 per 40 000 people	10 000 sqm	80
Community Health Care Centre	1 per 20,000 people	5 000 sqm	10
<b>Community Services</b>			
Religious centres	1 per 2,000 people	1500 sqm	5
Local Library	1 per 15 000 people	250 sqm	15
Community Hall	1 per 10,000 people	5000 sqm	10
Fire station/emergency services	1 per 20,000 people	6 000 sqm	60
Police Station	1 per 15 000 people	2500 sqm	30
Post Office	1 per 10,000 people	350 sqm	15
Thusong Centre	1 per 20,000 people	5000 sqm	15
Municipal offices/pay points	1 per 15 000 people	2000 sqm	10
Community Information centres	1 per 10,000 people	100 sqm	10
FET or Tertiary Training College	1 per 20,000 people	30 000 sqm	60
Indoor Sport Facility	1 per 20,000 people	2500 sqm	20
Multipurpose Sports Complex	1 per 30,000 people	30 000 sqm	30
Community Park	1 per 15 000 people	5000 sqm	15

**Key Regional Service Centres include** Upington, Kuruman, Springbok and De Aar



**Table 3: Social Services Requirements: Service Towns**

SERVICE TOWNS	Threshold	Area Required (sqm)	Travel Distance
<b>Education</b>			
Crèche, Nursery- & Pre-primary School	1 per 3,000 people	50 sqm per 45 Children	2
Primary School	1 per 6,000 people	20 000 sqm	5
Secondary / High School	1 per 8,000 people	40 000 sqm	5
<b>Health</b>			
Primary Health Clinic	1 per 5,000 people	1000 sqm	5
Community Health Care Centre	1 per 20,000 people	3 000 sqm	10
<b>Community Services</b>			
Religious centres	1 per 2,000 people	500 sqm	5
Local Library	1 per 8,000 people	150 sqm	10
Community Hall	1 per 8,000 people	1500 sqm	10
Fire station/emergency services	1 per 15000 people	3 000 sqm	60
Police Station	1 per 10,000 people	1500 sqm	30
Post Office	1 per 8,000 people	250 sqm	10
Municipal offices/pay points	1 per 10,000 people	1000 sqm	10
Indoor Sport Facility	1 per 20,000 people	2500 sqm	10
Small Park	1 per 8,000 people	2500 sqm	5

**Key Regional Service Towns include (among others):**

- Kathu
- Postmasburg
- Warrenton
- Douglas
- Prieska
- Calvinia
- Mothibistad

**Table 4: Social Services Requirements: Small Service Towns**

SMALL SERVICE TOWNS	Threshold	Area Required (sqm)	Travel Distance
<b>Education</b>			
Crèche, Nursery- & Pre-primary School	1 per 3,000 people	50 sqm per 45 Children	2
Primary School	1 per 5,000 people	20 000 sqm	5
Secondary / High School	1 per 7 000 people	40 000 sqm	5
<b>Health</b>			
Primary Health Clinic	1 per 5,000 people	500 sqm	10
<b>Community Services</b>			
Religious centres	1 per 2,000 people	500 sqm	5
Local Library	1 per 7 000 people	150 sqm	10
Community Hall	1 per 5,000 people	500 sqm	10
Police Station	1 per 7 000 people	500 sqm	30
Post Office	1 per 7 000 people	150 sqm	10
Municipal offices/pay points	1 per 8,000 people	250 sqm	10
Small Park	1 per 3,000 people	2000 sqm	2

**Key Small Service Towns include (among others):**

- Noupoort
- Steinkopf
- Carnarvon
- Griekwastad
- Port Nolloth
- Sutherland
- Pofadder
- Garies
- Williston
- Britstown



## 1.2 SOCIAL SERVICES WHEEL

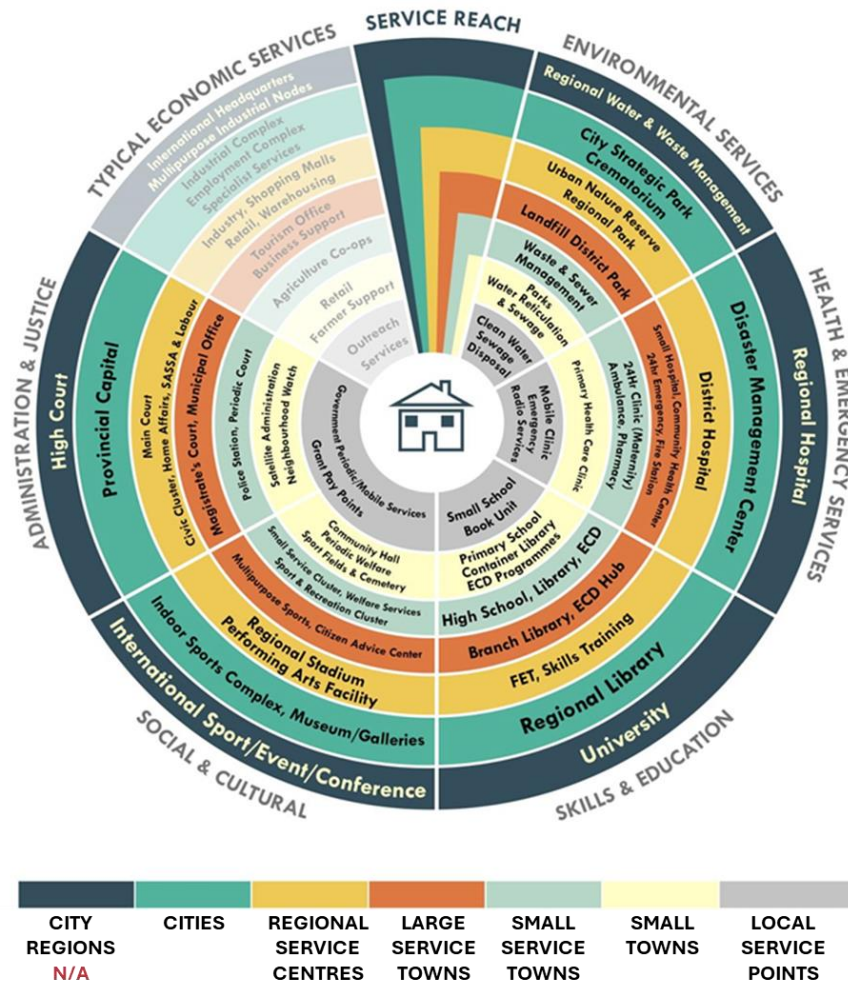


Figure 1: Social Services Wheel Adopted for the PSDF (as adapted from the Karoo RSDf)

The Social Services Wheel is a framework used to assess and prioritise the provision and maintenance of social services and facilities across different types of towns and settlements. The wheel encompasses various indicators

that reflect the availability and condition of social services such as healthcare, education, and community facilities. This approach helps in making rational decisions about where to place or upgrade these services, ensuring they are accessible and beneficial to the specific local population.

### 1.2.1 INDICATORS OF THE SOCIAL SERVICES WHEEL

#### 1.2.1.1 Economic Services

The economic services indicators include Industrial Complex, Employment Complex, Specialist Services; Industries, Shopping Malls, Retail and Warehousing; Tourism Office and Business Support; Agricultural Co-ops; and Retail and Farmer Support.

#### 1.2.1.2 Environmental Services

The environmental services indicators are City Strategic Park and Crematorium; Urban Nature Reserve, Regional Park; District Landfill; Waste & Sewer Management; and Parks, Water and Sewer Reticulation.

#### 1.2.1.3 Health and Emergency Services

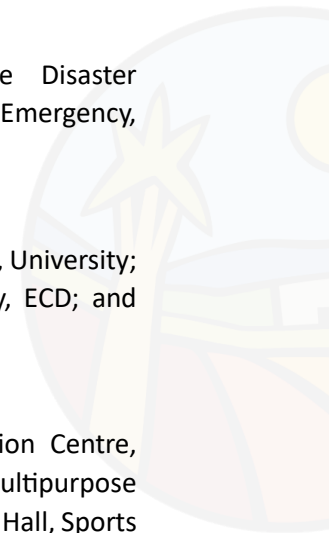
The health and emergency services indicators include Disaster Management Centre; District Hospital; Small Hospital, CHC, Emergency, Fire Station; 24hr Clinic, Ambulance, Pharmacy; and Clinic.

#### 1.2.1.4 Skills and Education Services

The skills and education services indicators are Regional Library, University; FET, Skills Training; Branch Library, ECD; High School, Library, ECD; and Primary, ECD Programs.

#### 1.2.1.5 Social and Cultural Services

The social and cultural services indicators include Convention Centre, Indoor Sports, Museum; Regional Stadium, Arts Facility; Multipurpose Sports Centre; Welfare, Sports and Recreation; and Community Hall, Sports Fields, and Cemetery.



### 1.2.1.6 Administration and Justice Services

The administration and justice services indicators are the High Court; Main Court, Civic Cluster, Home Affairs, SASSA and Labour; Magistrates Court, LM Office; and Police Station.

## 1.2.2 IMPLICATIONS FOR VARIOUS INDICATORS

The implications of these indicators vary depending on the classification and hierarchy of towns:

### 1.2.2.1 Cities

Cities typically have a range of health facilities, but upgrades may be required to meet increasing demand. Educational facilities are usually well-equipped but may need expansion or modernization. Recreational facilities are generally available but may require upgrades for better quality. Safety and security services are comprehensive but may need enhancements to cover new growth areas. Social welfare services are adequate but might require additional support services. Cultural services are well-established, focusing on maintaining and upgrading existing facilities.

### 1.2.2.2 Regional Service Centres/Regional Development Anchors

Regional service centres generally have adequate health services but may require upgrades for higher service standards. Educational facilities are generally available, with a focus on maintenance and minor upgrades. Existing recreational facilities may need upgrades. Safety and security services are adequate but might need expansion. Social welfare services are present but might need enhanced support. Cultural services are usually available, requiring periodic maintenance.

### 1.2.2.3 Large Service Towns

Large service towns have adequate health services but may need upgrading to cater to growing populations. Educational facilities are available and typically require maintenance. Recreational facilities are present but may need upgrades. Safety and security services are adequate, but expansion and upgrades may be needed. Social welfare services are present and might

need support enhancement. Cultural services are generally available, focusing on maintenance and minor upgrades.

### 1.2.2.4 Small Service Towns

Small service towns often require upgrades to health services. Educational facilities are available but may need maintenance. Recreational facilities are present but often need upgrades. Safety and security services may need expansion and upgrades. Social welfare services are available but need enhancement. Cultural services are present, with a focus on maintenance.

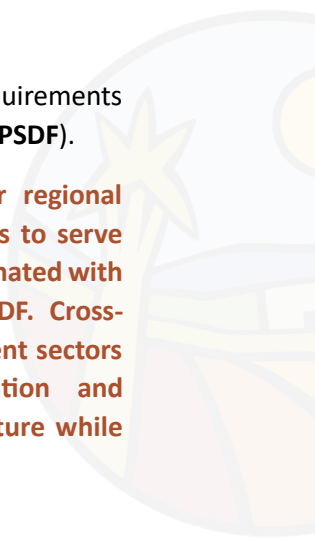
### 1.2.2.5 Small Towns

Small towns often lack health services and may need prioritisation for new facilities. Educational facilities are typically available but require upgrades. Recreational facilities often need upgrades. Safety and security services may be inadequate and need upgrading. Social welfare services often require enhancement. Cultural services are present but usually need maintenance.

### 1.2.2.6 Local Service Points

Local service points are excluded from the needs and requirements assessment for the Provincial Spatial Development Framework (PSDF).

**The strategic placement of social services should consider regional connectivity, ensuring facilities are on public transport routes to serve multiple communities. Investment alignment should be coordinated with national and provincial frameworks like the NSDF and PSDF. Cross-sectoral collaboration is essential, involving various government sectors for integrated planning and implementation. Prioritisation and maintenance should focus on maintaining existing infrastructure while strategically prioritizing new investments.**



### 1.2.3 REQUIREMENTS PER TOWN CATEGORY

The following requirement categories have been prepared for the key Towns in the Northern Cape Province:

- Yes, there is a facility but upgrading may be required: Indicates facilities exist but need improvements to meet demand.
- Yes, the facilities are available, and no upgrading is required, only maintenance: Facilities are adequate, requiring only routine maintenance.
- \* No, the service or facility is not available, it is not a priority: The absence of facilities is acknowledged but not deemed urgent.
- ▶ No, the service or facility is not available, priority is required: The absence of facilities is critical and needs immediate attention.
- ▶ Some services or facilities are provided but require additional services or facilities to support the requirements
- Not applicable to the Town, the services are or may not be required.
- ▶ Not available but Satellite Service may be required or proposed to support the economic potential of the town

The matrix prepared in the following pages provides an overview of the various services and facility requirements for each town. The towns are grouped according to the hierarchy of towns as defined by the Social Services Wheel/Northern Cape PSDF Nodal Composition, categorised as follows:

- **Cities**
- **Regional Service Centres/Regional Development Anchors**
- **Large Service Towns**
- **Small Service Towns**

No provision is made for small towns, as the details for these would be more relevant to lower-level spatial development frameworks. A Toolkit for Small Town Regeneration is provided as a supporting tool to sustain small-

town development according to the Small-Town Regeneration Strategy (STR).





		○ Yes, Upgrading Needed	● Yes, Maintenance Required	* Not Available, not a priority	▶ Not Available, Priority required	▶ Not Available, Some Facilities required	- Not applicable to the Town	▶ Satellite Service may be required																					
Town	Industrial Complex, Employment Complex,																												
	Industries, Shopping Malls, Retail and Warehousing																												
Town	Tourism Office and Business Support																												
	Agricultural Co-ops																												
Town	Retail and Farmer Support																												
	City Strategic Park and Crematorium																												
Town	Urban Nature Reserve, Regional Park																												
	District Landfill																												
Town	Waste & Sewer Management																												
	Parks, Water and Sewer Reticulation																												
Town	Disaster Management Centre																												
	District Hospital																												
Town	Small Hospital, CHC, Emergency, Fire Station																												
	24hr Clinic, Ambulance, Pharmacy																												
Town	Clinic																												
	Regional Library, University																												
Town	FET, Skills Training																												
	Branch Library. ECD																												
Town	High School, Library, ECD																												
	Primary, ECD Programs																												
Town	Convention Centre, Indoor Sports, Museum																												
	Regional Stadium, Arts Facility																												
Town	Multipurpose Sports Centre																												
	Welfare, Sports and Recreation																												
Town	Community Hall, Sport Fields, Cemetery																												
	High Court																												
Town	Main Court, Civic Cluster, Home Affairs, SASSA & Labour																												
	Magistrates Court, LM Office																												
Town	Police Station																												
SERVICE	ECONOMIC	ENVIRONMENTAL				HEALTH AND EMERGENCY				SKILLS AND EDUCATION				SOCIAL & CULTURAL				ADMIN AND JUSTICE											
KIMBERLEY	○	●	○	●	●	○	○	▶	○	○	▶	○	○	○	○	●	●	●	○	○	○	○	▶	○	○	●	○	○	○
UPINGTON	-	●	▶	●	●	-	▶	▶	○	○	▶	○	●	●	○	▶	○	▶	●	●	-	○	▶	○	○	-	○	●	●
KURUMAN	-	○	▶	●	●	-	○	▶	○	○	-	●	○	●	○	-	○	○	○	●	-	*	*	○	○	-	●	●	●
SPRINGBOK	-	▶	○	○	●	-	●	○	○	○	▶	●	●	●	●	-	●	○	●	●	-	●	▶	●	○	-	○	○	○
DE AAR	-	-	○	●	●	-	-	○	○	○	*	●	▶	●	●	-	○	○	●	●	-	○	▶	○	○	-	○	○	●
Kathu	-	●	▶	*	●	-	-	○	●	●	-	-	●	●	●	-	●	*	●	●	-	-	*	●	●	-	▶	●	●
Postmasburg	-	○	-	-	○	-	-	*	○	○	-	○	▶	▶	●	-	-	-	●	●	-	○	*	○	○	-	-	●	●
Warrenton	-	-	▶	▶	▶	-	-	-	○	○	-	-	▶	▶	○	-	-	-	●	○	-	-	*	○	○	-	*	○	○
Barkley West	-	-	*	●	●	-	-	-	○	○	-	-	○	●	●	-	▶	-	●	●	-	-	-	●	▶	-	-	●	○
Douglas	-	-	▶	●	●	-	-	○	○	○	-	-	○	●	●	-	▶	*	●	●	-	*	▶	○	●	-	○	●	●
Jan Kempdorp	-	*	*	●	●	-	-	-	○	○	-	-	○	*	○	-	-	-	▶	●	-	-	-	○	▶	-	-	○	○



<span>○</span> Yes, Upgrading Needed <span>●</span> Yes, Maintenance Required <span>*</span> Not Available, not a priority <span>▶</span> Not Available, Priority required <span>▶</span> Not Available, Some Facilities required <span>-</span> Not applicable to the Town <span>▶</span> Satellite Service may be required																														
Town	Industrial Complex, Employment Complex, Industries, Shopping Malls, Retail and Warehousing Tourism Office and Business Support Agricultural Co-ops Retail and Farmer Support City Strategic Park and Crematorium Urban Nature Reserve, Regional Park District Landfill Waste & Sewer Management Parks, Water and Sewer Reticulation Disaster Management Centre District Hospital Small Hospital, CHC, Emergency, Fire Station 24hr Clinic, Ambulance, Pharmacy Clinic Regional Library, University FET, Skills Training Branch Library. ECD High School, Library, ECD Primary, ECD Programs Convention Centre, Indoor Sports, Museum Regional Stadium, Arts Facility Multipurpose Sports Centre Welfare, Sports and Recreation Community Hall, Sport Fields, Cemetery High Court Main Court, Civic Cluster, Home Affairs, SASSA & Labour Magistrates Court, LM Office Police Station																													
	SERVICE	ECONOMIC					ENVIRONMENTAL					HEALTH AND EMERGENCY					SKILLS AND EDUCATION					SOCIAL & CULTURAL					ADMIN AND JUSTICE			
Colesberg	-	-	▶	*	●	-	-	*	○	○	*	-	○	▶	●	-	▶	-	○	○	-	-	*	○	○	-	-	●	●	
Ritchie	-	-	-	●	●	-	-	-	-	○	-	-	-	▶	○	-	-	-	*	○	-	-	-	○	○	-	-	▶	○	
Prieska	-	-	▶	●	●	-	-	*	○	○	-	-	●	*	○	-	-	-	○	○	-	*	*	○	○	-	-	●	●	
Danielskuil	-	-	-	●	●	-	-	-	○	○	-	-	●	●	●	-	-	-	-	○	○	-	-	*	●	●	-	*	●	●
Hartswater	-	●	▶	●	●	-	-	*	○	○	-	-	○	○	○	-	-	-	-	○	○	-	-	●	○	○	-	*	○	●
Delpportshoop	-	-	-	-	*	-	-	-	○	○	-	-	-	-	●	-	-	-	-	○	○	-	-	-	○	○	-	-	▶	○
Hopetown	-	-	-	●	○	-	-	-	○	○	-	-	▶	▶	●	-	-	-	-	▶	●	-	-	-	○	○	-	-	●	●
Olifantshoek	-	-	-	●	●	-	-	-	○	○	-	-	▶	▶	●	-	-	-	-	○	○	-	-	*	○	○	-	-	●	●
Calvinia	-	-	○	*	*	-	-	*	○	○	-	-	○	*	○	-	▶	-	○	○	-	-	-	○	○	-	-	○	○	
Kakamas	-	-	-	●	●	-	-	-	○	○	-	-	▶	●	●	-	-	-	-	▶	●	-	-	-	○	○	-	-	○	●
Victoria West	-	-	-	●	●	-	-	-	○	○	-	-	○	-	●	-	-	-	-	○	○	-	-	-	○	○	-	-	●	●

<span>○</span> Yes, Upgrading Needed <span>●</span> Yes, Maintenance Required              * Not Available, not a priority <span>▶</span> Not Available, Priority required <span>▶</span> Not Available, Some Facilities required              - Not applicable to the Town <span>▶</span> Satellite Service may be required																																																																																																																																												
Town	Industrial Complex, Employment Complex, Industries, Shopping Malls, Retail and Warehousing					Tourism Office and Business Support					Agricultural Co-ops					Retail and Farmer Support					City Strategic Park and Crematorium					Urban Nature Reserve, Regional Park					District Landfill					Waste & Sewer Management					Parks, Water and Sewer Reticulation					Disaster Management Centre					District Hospital					Small Hospital, CHC, Emergency, Fire Station					24hr Clinic, Ambulance, Pharmacy					Clinic					Regional Library, University					FET, Skills Training					Branch Library. ECD					High School, Library, ECD					Primary, ECD Programs					Convention Centre, Indoor Sports, Museum					Regional Stadium, Arts Facility					Multipurpose Sports Centre					Welfare, Sports and Recreation					Community Hall, Sport Fields, Cemetery					High Court					Main Court, Civic Cluster, Home Affairs, SASSA & Labour					Magistrates Court, LM Office					Police Station				
	SERVICE	ECONOMIC					ENVIRONMENTAL					HEALTH AND EMERGENCY					SKILLS AND EDUCATION					SOCIAL & CULTURAL					ADMIN AND JUSTICE																																																																																																																	
Mothibistad	-	○	-	*	○	-	-	*	○	○	-	○	○	*	●	-	-	-	○	○	-	○	●	○	○	-	-	-	○	○	-	○	●	○	○	-	-	-	○	○	-	▶	○	○	-	-	○	○																																																																																												
Noupoort	-	-	-	-	*	-	-	-	○	○	-	-	▶	▶	●	-	-	-	○	○	-	-	-	●	▶	-	-	-	-	-	-	-	-	-	-	-	-	-	-	-	-	-	●	●																																																																																																
Steinkopf	-	-	-	-	*	-	-	-	-	○	-	-	-	-	●	-	-	-	-	○	-	-	-	-	○	-	-	-	-	-	-	-	-	-	-	-	-	-	-	-	-	-	-	-																																																																																																
Carnarvon	-	-	-	●	●	-	-	-	○	○	-	-	▶	▶	●	-	-	-	*	○	-	-	-	-	○	-	-	-	▶	○	-	-	-	-	-	-	-	-	-	-	-	-	●	●																																																																																																
Griekwastad	-	-	-	○	○	-	-	-	○	○	-	-	-	▶	●	-	-	-	-	○	-	-	-	-	○	-	-	-	▶	●	-	-	-	-	-	-	-	-	-	-	-	-	○	○																																																																																																
Port Nolloth	-	-	▶	-	-	-	-	-	○	○	-	-	▶	▶	●	-	-	*	-	○	-	-	-	-	○	-	-	-	▶	○	-	-	-	-	-	-	-	-	-	-	-	-	○	○																																																																																																
Britstown	-	-	-	●	●	-	-	-	○	○	-	-	-	-	○	-	-	-	*	○	-	-	-	-	○	-	-	-	○	○	-	-	-	-	-	-	-	-	-	-	-	-	●	○																																																																																																
Concordia	-	-	-	-	-	-	-	-	-	○	-	-	-	-	○	-	-	-	-	○	-	-	-	-	▶	-	-	-	▶	-	-	-	-	-	-	-	-	-	-	-	-	-	-	*																																																																																																
Groblerstroom	-	-	▶	●	●	-	-	-	○	○	-	-	-	▶	●	-	-	-	-	○	-	-	-	-	▶	-	-	-	○	○	-	-	-	-	-	-	-	-	-	-	-	-	●	●																																																																																																
Williston	-	-	-	●	●	-	-	-	○	○	-	-	▶	▶	●	-	-	-	-	○	-	-	-	-	○	-	-	-	▶	○	-	-	-	-	-	-	-	-	-	-	-	-	○	○																																																																																																
Pofadder	-	-	-	●	●	-	-	-	○	○	-	-	-	▶	●	-	-	-	-	○	-	-	-	-	○	-	-	-	▶	-	-	-	-	-	-	-	-	-	-	-	-	-	○	○																																																																																																



		○ Yes, Upgrading Needed		● Yes, Maintenance Required		* Not Available, not a priority		▶ Not Available, Priority required		▶ Not Available, Some Facilities required		- Not applicable to the Town		▶ Satellite Service may be required																		
SERVICE	Town	ECONOMIC					ENVIRONMENTAL					HEALTH AND EMERGENCY					SKILLS AND EDUCATION					SOCIAL & CULTURAL					ADMIN AND JUSTICE					
		Industrial Complex, Employment Complex,	Industries, Shopping Malls, Retail and Warehousing	Tourism Office and Business Support	Agricultural Co-ops	Retail and Farmer Support	City Strategic Park and Crematorium	Urban Nature Reserve, Regional Park	District Landfill	Waste & Sewer Management	Parks, Water and Sewer Reticulation	Disaster Management Centre	District Hospital	Small Hospital, CHC, Emergency, Fire Station	24hr Clinic, Ambulance, Pharmacy	Clinic	Regional Library, University	FET, Skills Training	Branch Library. ECD	High School, Library, ECD	Primary, ECD Programs	Convention Centre, Indoor Sports, Museum	Regional Stadium, Arts Facility	Multipurpose Sports Centre	Welfare, Sports and Recreation	Community Hall, Sport Fields, Cemetery	High Court	Main Court, Civic Cluster, Home Affairs, SASSA & Labour	Magistrates Court, LM Office	Police Station		
Sutherland		-	-	○	*	●	-	-	-	○	○	-	-	-	○	○	-	-	-	-	○	-	-	-	○	○	-	-	-	○	○	
Garies		-	-	○	●	●	-	-	-	○	○	-	-	●	▶	●	-	-	-	▶	○	-	-	-	▶	○	○	-	-	-	○	○
Kamieskroon		-	-	-	-	*	-	-	-	-	○	-	-	-	○	-	-	-	-	○	-	-	-	-	○	-	-	-	-	-	○	○

